

S O t M

Ultimate High Performance Audio

sMS-100 Operating Instructions

Rev. : 2.3

www.sotm-audio.com

주의 사항

Please read this instruction carefully before you use this product.

- Do not attempt to disassemble or modify the product.
- Keep the product away from the external shocks or vibrations.
- Do not use the damaged or peeled cables.
- Do not use the product outdoors.
- Product specifications and features are subject to change without notice.

Warranty Information

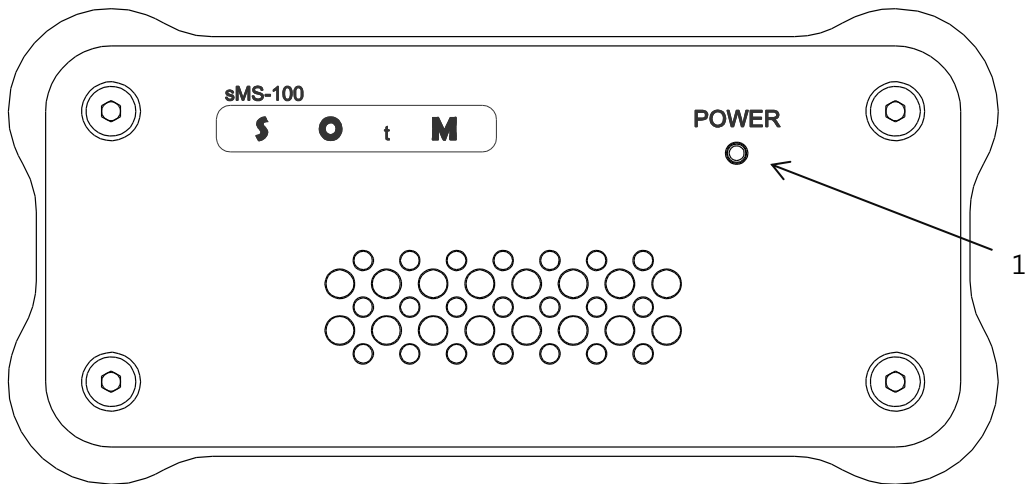
- Free warranty service
 - In case of the defect is found caused by the design or the production flaw while using the device properly, a manufacturer is responsible for the faulty product and the free warranty service for 1 year from the date of purchasing.
 - Even in the warranty service period, a malfunction or damage of products caused by the inevitable incident such as a natural disaster is not subject of the free warranty service.
- Warranty service at a cost
 - The product that free warranty service period is expired.
 - Malfunction of the product caused by a user's fault.
 - Malfunction of the product caused by incidents.
 - Malfunction of the product caused by a natural disaster such as earthquake, flood, lightning & etc.
 - In case of the warranty service at a cost, a customer should pay the transportation costs.
- Sample of a user's fault
 - In case of disassemble or modify the product.
 - In case of not following the instructions on this manual.
- A Please read this instructions and Q&A board on our website carefully before asking for the warranty service.

Supplied accessories

- SMS-100
- standard wall adopter(9V/2A)

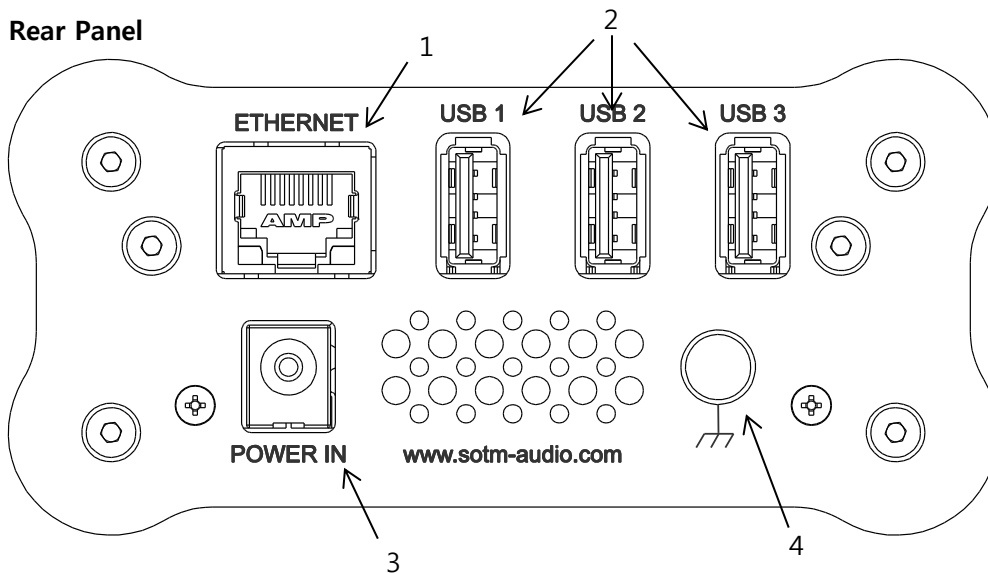
Front & Rear Panels

■ Front Panel



- ① Power LED : indicate the power on/off status.

■ Rear Panel



- ① ETHERNET port: connect to a network router by LAN Cable.
② USB port: connect to a USB DAC or USB audio device.
③ POWER IN jack: it is a power input jack.
④ Earth terminal: connect to the earth ground.

About sMS-100

- 'sMS-100' is a network player which supports SqueezeLite, AirPlay, DLNA, MPD, and HQPlayer NAA function.
 - 'SqueezeLite' output mode: connect sMS-100 to Logitech Media Server (LMS) through a local area network and playback the music files listed in LMS.
 - 'AirPlay' output mode: connect sMS-100 to compatible Apple devices (iTunes, iPad, etc.) through a local area network and playback the music files.
 - 'DLNA' output mode: connect sMS-100 to DLNA server through a local area network and playback the music files shared by DLNA server.
 - 'MPD' output mode: connect sMS-100 to Vortexbox based music servers through a local area network and playback the music files.
 - "HQPlayer NAA" output mode: connect sMS-100 to HQPlayer through a local area network and playback the music files.
- Several sMS-100s connected to the local area network can playback each music files individually at the same time.
- You can simply set up the multi-room audio system by connecting a USB audio device to USB port on the rear panel of sMS-100.

Connection Guide

Please refer to the below image.



How to Use SMS-100

1 Check before you turn on SMS-100

- 1.1 Connect a network router to the Ethernet port on the rear panel of SMS-100 by LAN cable.
- 1.2 Connect a USB DAC or DDC to the USB port on the rear panel of SMS-100 by USB cable.
- 1.3 Check the device used as for a server, each server device should operate normally in the local area network.
 - 1.3.1 SqueezeLite
 - 1.3.1.1 To use SqueezeLite function, please install LMS on a computer or NAS connected to the local area network.
 - 1.3.1.2 Select 'SOtM-Squeeze' as the player in LMS.
 - 1.3.1.3 Use LMS, mobile device APP Squeezebox, or other approved Logitech controllers such as iPeng for playback control.

1.3.2 AirPlay

1.3.2.1 To use AirPlay function, select 'SotM-Airplay' as the Airplay output on your iPad, iPhone, and on iTunes.

1.3.3 DLNA

1.3.3.1 To use DLNA function, a Digital Media Server (DMS) and a Digital Media Controller (DMC) are needed. The sMS-100 will operate as your Digital Media Renderer (DMR) for playback of your content.

1.3.3.2 A computer or NAS can function as a DMS. Examples of DMS: J River, Diskstation, LMS, and MinimServer.

1.3.3.3 A computer or mobile device can function as a DMC. Example of DMCs: AudioNet, J River, PlugPlayer, BubbleUPnP, and Foobar2000 with UPnP plug-in.



1.3.4 MPD

1.3.4.1 To use MPD function, confirm that a Vortexbox based music server is connected and running on the local area network.

1.3.4.2 Use an MPD client controller and select Sonic Orbiter as the player. You may need to update MPD's library database and update the client's local cache for playback.

1.3.5 HQPlayer NAA

1.3.5.1 To use the NAA function, confirm that HQPlayer NAA version is running on a computer on the local area network.

1.3.5.2 No additional configuration is required and HQPlayer will automatically connect to the sMS-100.

2 Turn on SMS-100 and check the operation status.

- 2.1 Please turn on SMS-100 by connecting the standard wall adaptor (9V/2A) or mBPS-d2s to POWER IN jack on the rear panel of SMS-100.
- 2.2 Please wait around **5mins** until the SMS-100 boot process is completed.
- 2.3 Once finished the booting, please connect SMS-100 Web Page to check the operation status.

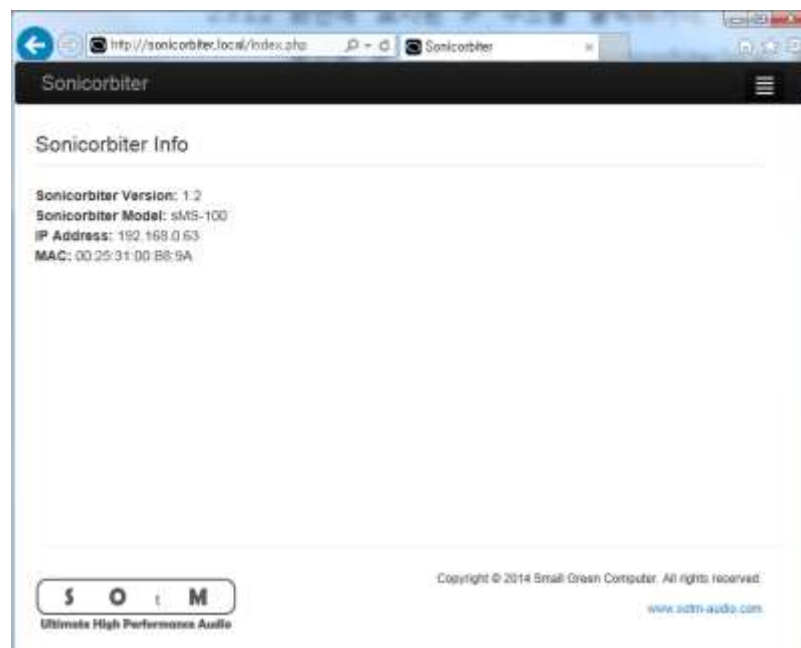
2.3.1 How to connect SMS-100 Web Page

- 2.3.1.1 Please type '<http://sonicorbiter.com/my/>' on an address bar in a web browser to check SMS-100's IP address.

(If you can't access the SMS-100 Web page, you need to wait a bit more until the booting will be finished completely.)



- 2.3.1.2 Please click the IP address on the screen or type the IP address or '<http://sonicorbiter.local/>' on an address bar in a web browser to connect SMS-100 Web Page.

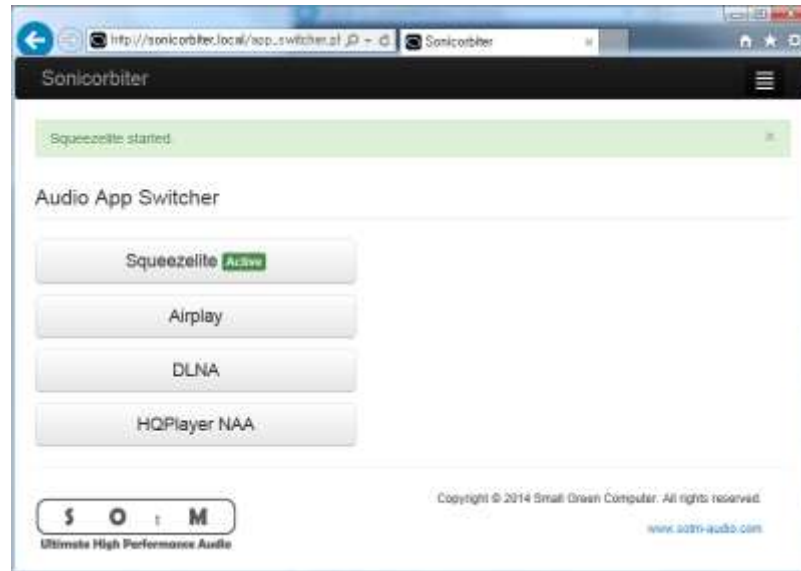


3 How to playback music files

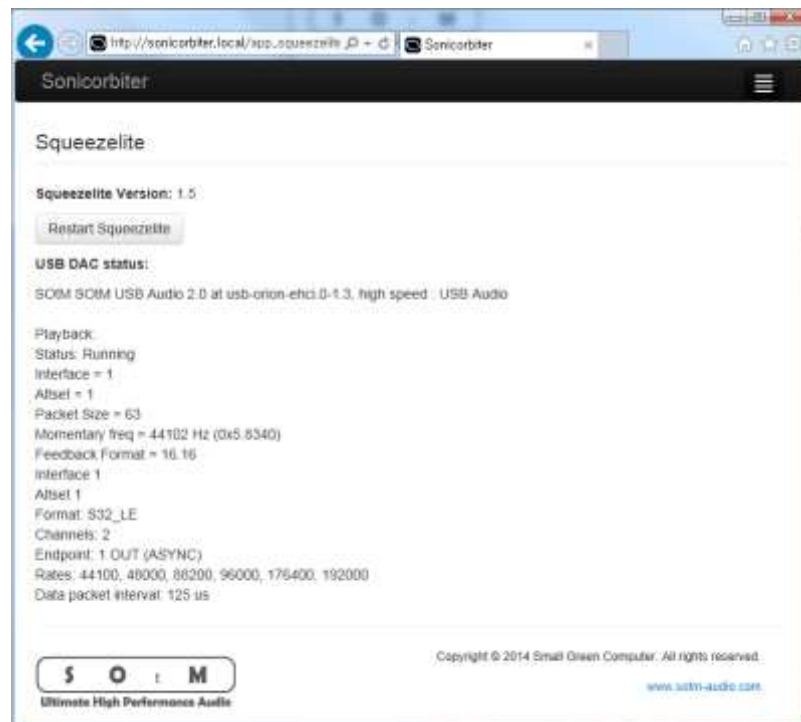
3.1 SqueezeLite

3.1.1 Set up SqueezeLite function

3.1.1.1 In SMS-100 Web Page, please open 'Apps -> Audio App Switcher' menu, and select 'SqueezeLite'.



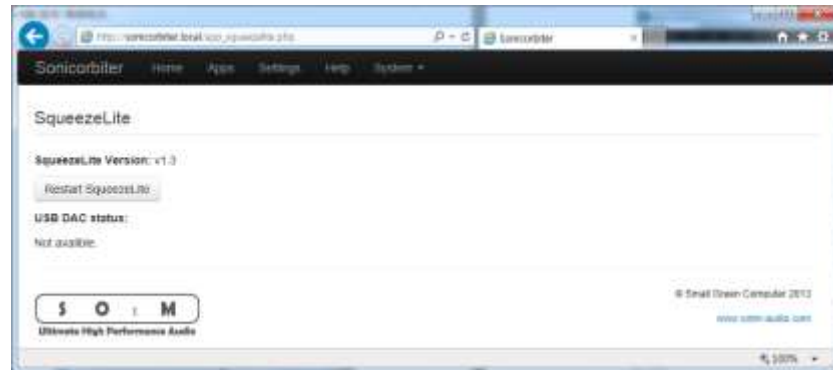
3.1.1.2 If you want to check the information about USB DAC status which is currently connected with SMS-100, please open 'Apps -> SqueezeLite' menu, you will find the information.



<USB audio device is connected normally >

3.3.1.3 If you can't playback the contents normally even though the USB audio device is connected, please click 'Restart Squuzelite' button on the upper right side.

3.3.1.4 If the USB audio device is not connected normally, 'Not available' message is indicated as the below image, you should check the USB audio device connection.



< USB audio device is not connected normally >

3.3.2 Browse and play music files

3.3.2.1 By LMS Web Remote Control

A. Please connect LMS by using one of following ways.

- If you choose SMS-1000 as for LMS, please click the SqueezeBox icon in Vortexbox(sMS-1000) Web GUI or type 'http://vortexbox:9000' on an address bar in a web browser.
- If you choose PC or MAC as for LMS, please execute LMS software.

3.3.2.2 By iPeng App (iPad)

- A. Please execute iPeng, and click the dropdown menu on the upper right side of the screen, and select 'SOtM-Squeeze' (sMS-100).



- B. Once sMS-100 is selected, browse and playback music files.



(You can adjust volume by the Volume Bar on the upper right side of the screen.)

- B. Please click Airplay icon(the next button of Volume Bar) on the left side of the screen and select 'SOtM-Airplay'(sMS-100).

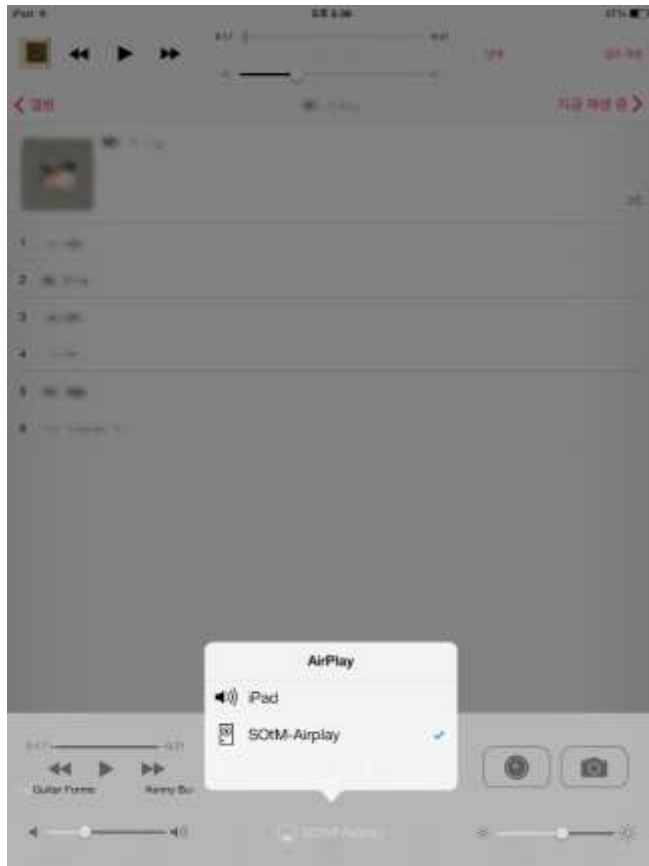


- C. Once SOtM-Airplay(sMS-100) is selected, browse and playback music files.



3.2.2.2 By iPad or iPhone

- A. Please touch iPad or iPhone's screen from the bottom to up to execute 'Control Center', and click 'Airplay' and select SOTM-Airplay(sMS-100).



(when you select 'AirPlay' on iPad)



(when you select 'AirPlay' on iPhone)

- B. Once SOTM-Airplay(sMS-100) is selected, browse and playback music files by the music player application for iPad or iPhone.



(This is an image when playing music files on iPad)

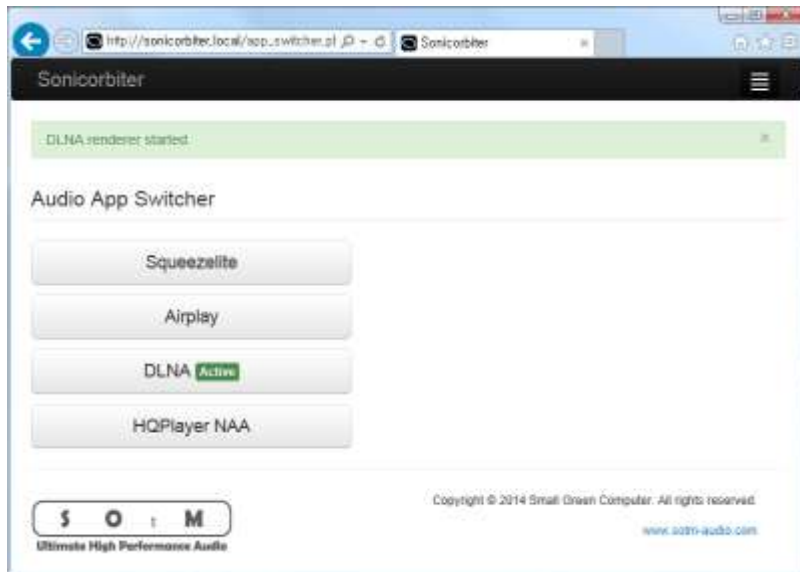


(This is an image when playing music files on iPhone)

3.3 DLNA

3.3.1 Set up DLNA function

In SMS-100 Web Page, please open 'Apps -> Audio App Switcher' menu, and select 'DLNA'.



3.3.2 Browse and play music files By PlugPlayer (iPad)

3.3.2.1 Please execute 'PlugPlayer' and click 'Devices' on the bottom of the screen, select 'SOTM-DLNA(sMS-100)' as the digital media renderer and select the digital media server that contains your files.



3.3.2.2 Once SotM-DLNA(sMS-100) is selected, browse and playback music files.



3.3.2.3 This is an image when playing music files.

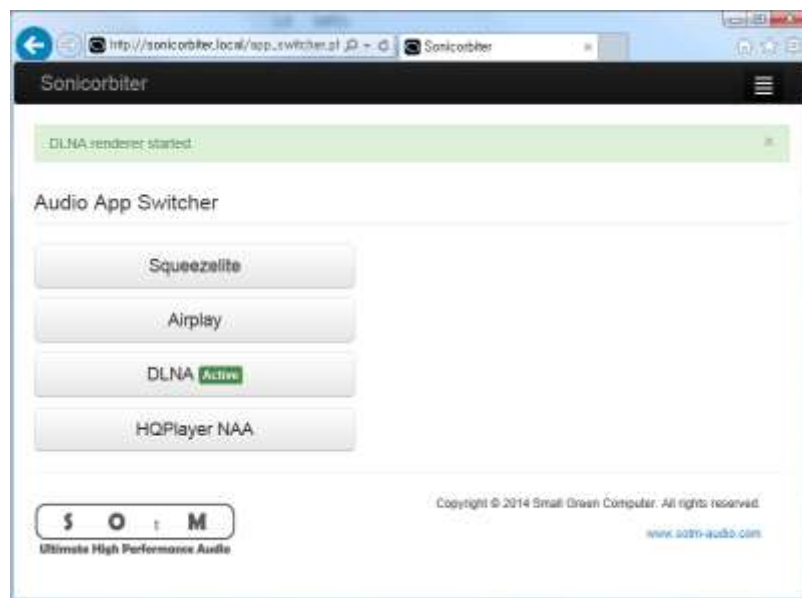


3.5 MPD

3.5.1 Set up MPD function

3.5.1.1 The MPD function automatically detects the device running Vortexbox through the local area network and connects shared music files. You can browse and playback the shared music files by using control programs like MPaD or MPDroid.

3.5.1.2 In SMS-100 Web Page, please click 'Apps -> Audio App Switcher', and select DLNA.



3.5.1.3 To check the connection information of the Vortexbox shared music file, please open 'Apps -> System Status' menu, you will find the information at 'Mounted NFS server' line.

- Caution : Please don't use DLNA output mode when you use MPD output mode.

3.4.2 By MPaD (iPad)

3.4.2.1 Please execute MPaD, click the Players button on the upper side and select 'SOtM-MPD' (sMS-100), click 'Done' button.



3.4.2.2 Once sMS-100 is selected, browse and playback music files.



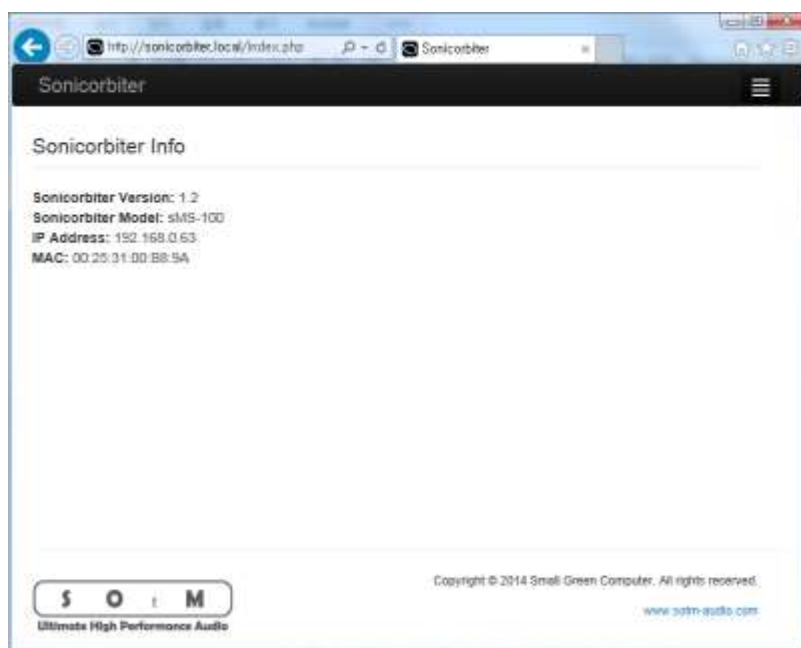
sMS-100 Web Page Menu

Please type sMS-100 IP address on an address bar in a web browser to connect sMS-100 Web Page.

(Please refer to 6 page, 2.3.1 How to connect sMS-100 Web Page.)

1 Home

Indicate sMS-100 software version and network connection information.



2 Apps



2.1 Audio App Switcher

Select one of audio output modes among SqueezeLite, AirPlay, DLNA, MPD and HQPlayer NAA. ('Active' mark is indicating on the currently selected audio function.)



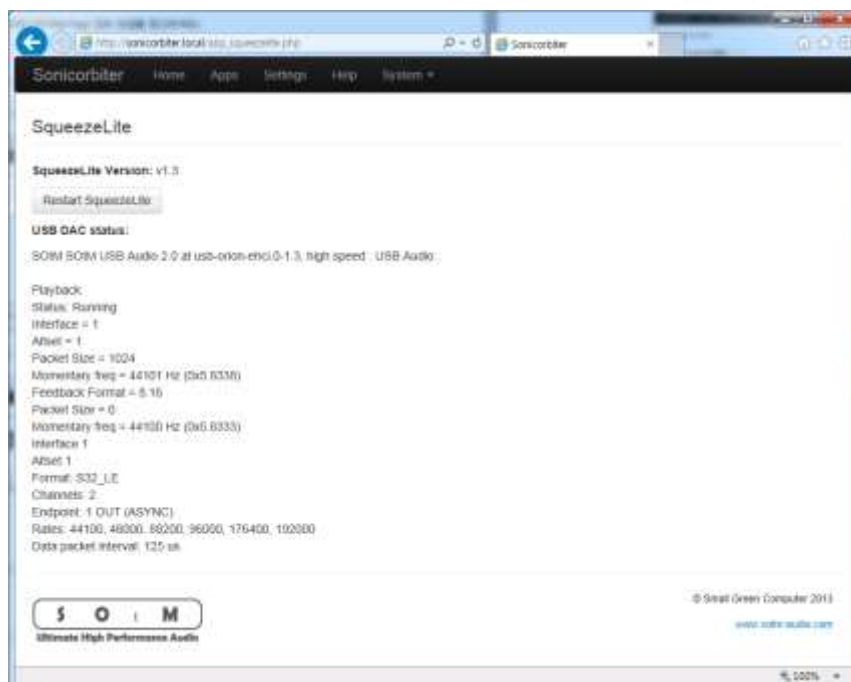
2.2 SqueezeLite

2.2.1 SqueezeLite Version: indicate SqueezeLite version.

2.2.2 Restart SqueezeLite: if the USB DAC status is indicated normally but music is not playing, please click this button.

2.2.3 USB DAC status: indicate the USB DAC information which is currently connected with sMS-100.

2.2.4 Play back: indicate the music file information which is currently playing.



2.3 MPD

2.3.1 Restart MPD: restart MPD.

2.3.2 Clear MPD database: clear the MPD database.



2.4 HQPlayer

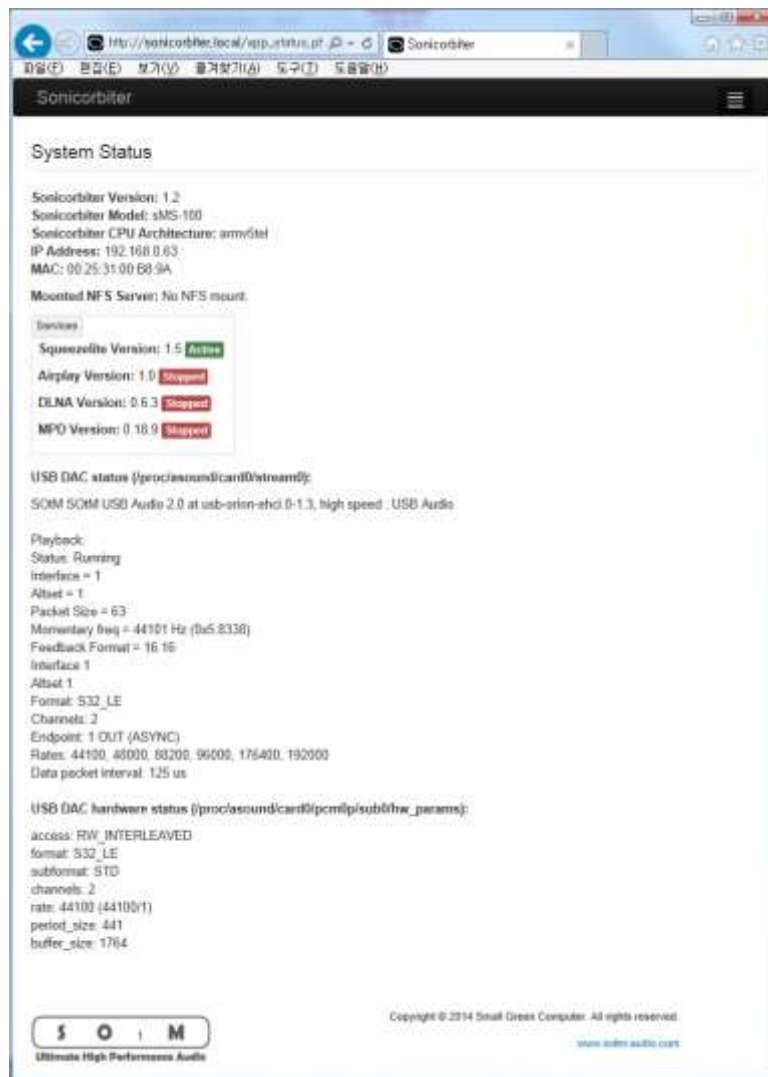
2.4.1 HQPlayer version : indicate the HQPlayer version.

2.4.2 HQPlayer EULA : indicate the HQPlayer's user license.



2.5 System Status

Indicate the current sMS-100's system status.



The screenshot displays the Sonicorbiter web interface. The browser address bar shows the URL `http://sonicorbiter.local:8080/`. The page title is "Sonicorbiter". The main content area is titled "System Status" and contains the following information:

- Sonicorbiter Version: 1.2
- Sonicorbiter Model: sMS-100
- Sonicorbiter CPU Architecture: armv8t1
- IP Address: 192.168.0.63
- MAC: 00:25:31:00:68:9A
- Mounted NFS Server: No NFS mount.
- Services:
 - Squeezebox Version: 1.5 **Active**
 - Airplay Version: 1.0 **Stopped**
 - DLNA Version: 0.6.3 **Stopped**
 - MPO Version: 0.18.9 **Stopped**
- USB DAC status (/proc/asound/card0/stream0):
SOM SOM USB Audio 2.0 at usb-oriin-ehd 0-1.3, high speed . USB Audio
- Playback:
 - Status: Running
 - Interface = 1
 - Altset = 1
 - Packet Size = 63
 - Momentary freq = 44101 Hz (0x5 8338)
 - Feedback Format = 16 16
 - Interface 1
 - Altset 1
 - Format: S32_LE
 - Channels: 2
 - Endpoint: 1 OUT (ASYNC)
 - Rates: 44100, 48000, 88200, 96000, 176400, 192000
 - Data packet interval: 125 us
- USB DAC hardware status (/proc/asound/card0/pcm0p/sub0/ha_params):
 - access: RW_INTERLEAVED
 - format: S32_LE
 - subformat: STD
 - channels: 2
 - rate: 44100 (44100/1)
 - period_size: 441
 - buffer_size: 1764

At the bottom of the page, there is a logo for "S O I M" and the text "Ultimate High Performance Audio". On the right side, there is a copyright notice: "Copyright © 2014 Small Green Computer. All rights reserved." and the website address "www.som-audio.com".

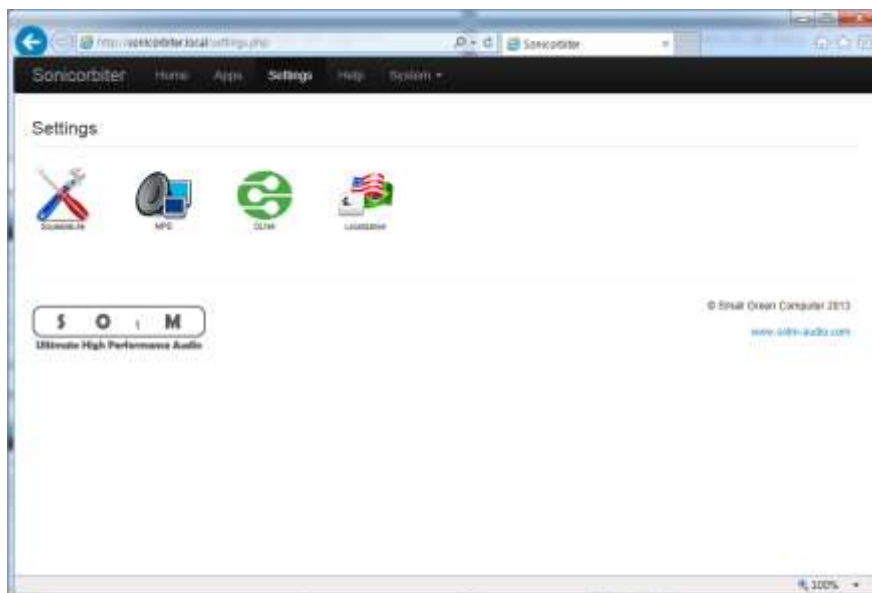
2.6 Software Update

Update sMS-100's software. Once you click the update button, it will detect the latest software version and start the update.

- Caution : Please set up the value at Settings menu and click 'Save changes' to save all needed information correctly after you update the software.



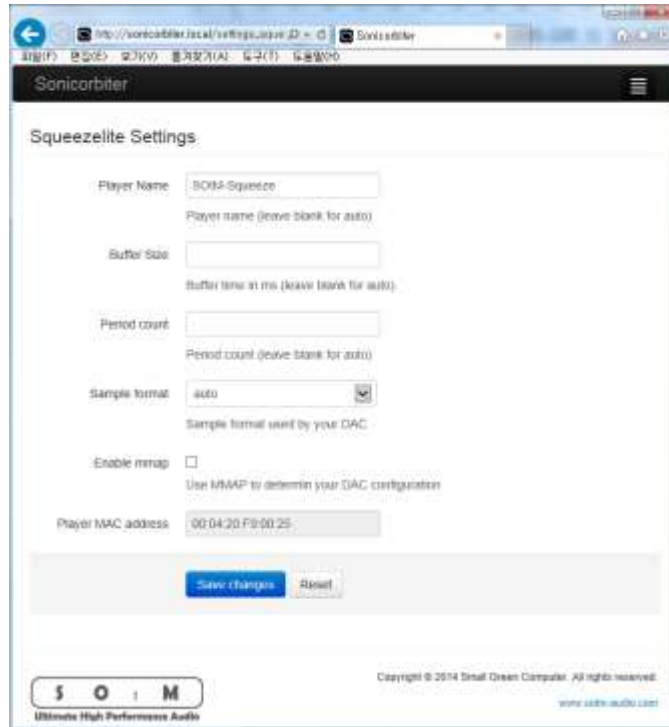
3 Settings



3.1 SqueezeLite

You can change sMS-100's SqueezeLite Player name and set up the setting values.

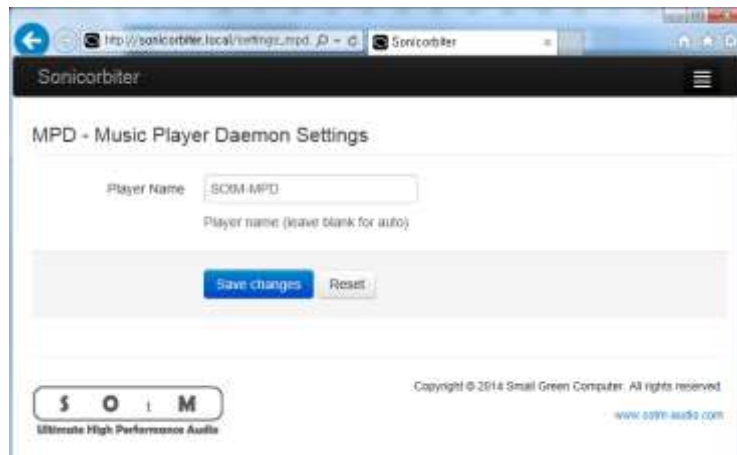
- Caution : Please set up the Player Name and click 'Save changes' button to save the needed information correctly after you update the software.



3.2 MPD

You can change sMS-100's MPD Player name.

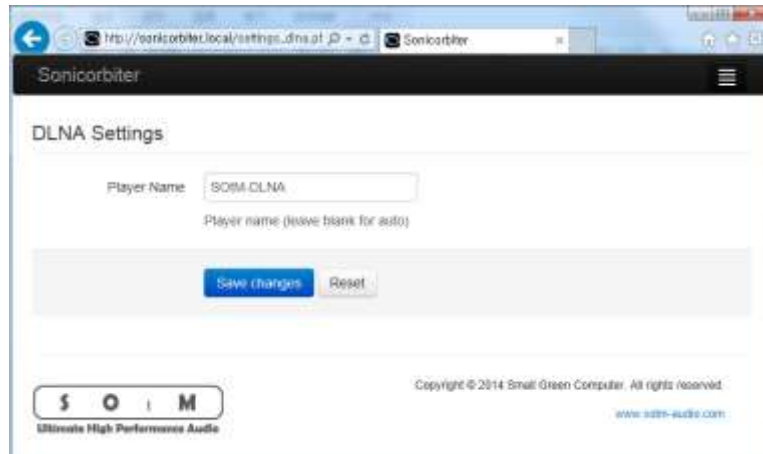
- Caution : Please set up the Player Name and click 'Save changes' button to save the needed information correctly after you update the software.



3.3 DLNA

You can change DLNA Player name.

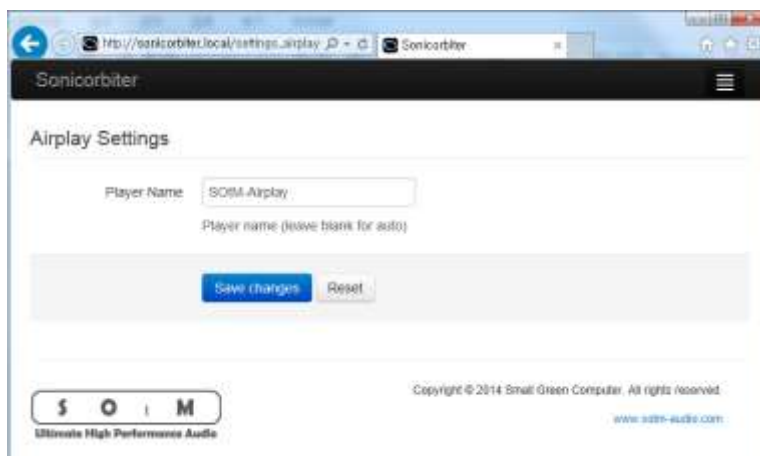
- Caution : Please set up the Player Name and click 'Save changes' button to save the needed information correctly after you update the software.



3.4 Airplay

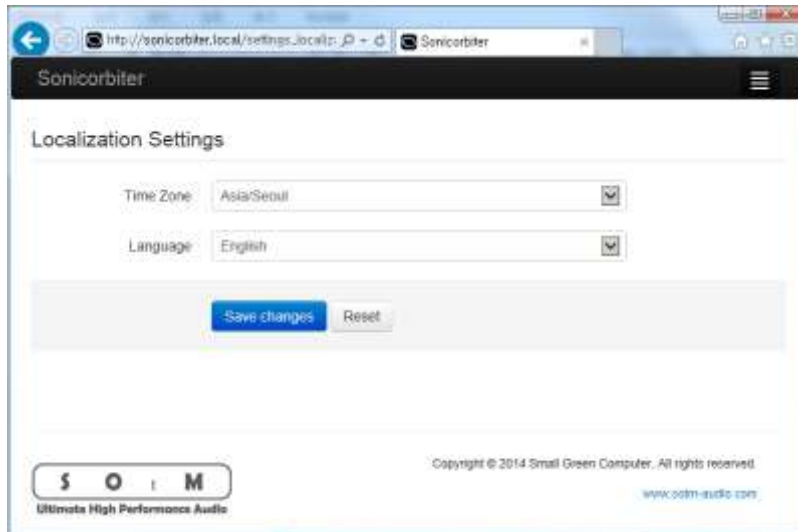
You can change Airplay Player name.

- Please set up the Player Name and click 'Save changes' button to save the needed information correctly after you update the software.



3.5 Localization

You can set up SMS-100's time zone or language.



4 Help

You can get the information how to use SMS-100.



5 System

5.1 Reboot: reboot SMS-100.

5.2 Power Down: finish the operation.

Specification

- Audio player feature
 - DNLA audio renderer
 - AirPlay
 - SqueezeLite
 - MPD
 - HQPlayer
 - Support 24bit/384KHz Max, DSD
 - High precision digital volume control
- Input voltage range : 7Vdc~9Vdc
- Input current : minimum 2A
- Ethernet : Gigabit Ethernet x 1
- USB port : USB 2.0 x 3
- Power indicate lamp x 1
- Dimension : 105mm x 53mm x 150mm
- Weight : 1kg >
- Operation environment
 - Operating temperature : 10°C ~ 35°C
 - Storage temperature : -10°C ~ 50°C
 - Operating & storage humidity : 10% ~ 90%

S O t M

Ultimate High Performance Audio