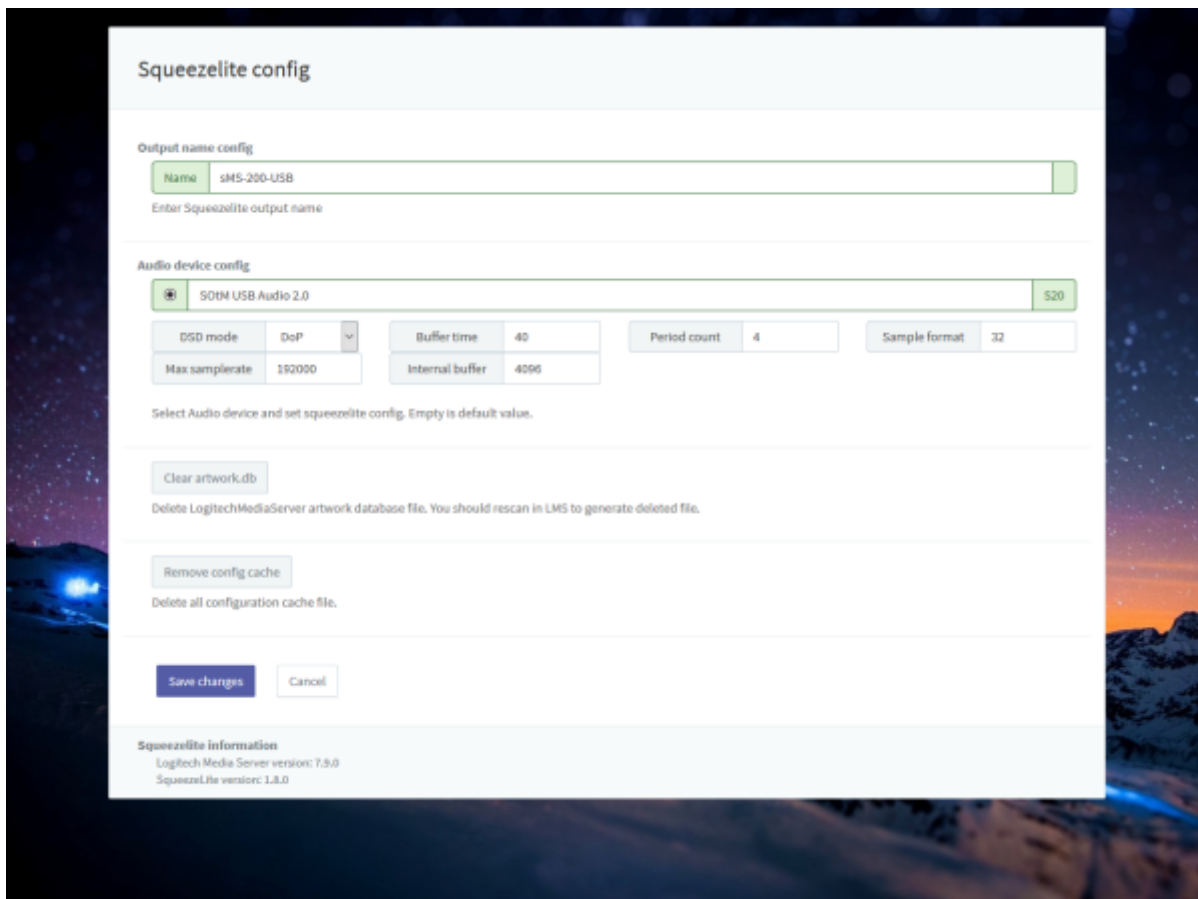


Squeezelite / Logitech Media Server

Squeezelite is a network music player which could be used with Logitech Media Server(aka. LMS). Eunhasu has LMS inside of itself which is available Tidal, Qobuz and internet radio.



- **Name:** A name of device Squeezelite appearing on LMS. This could be changed if you need.
- **Audio device config:** Select a radio button of USB DAC which is going to use and click 'Save changes' to use the USB DAC.
- **DSD mode:** Set playback mode. Convert music to PCM or playing DSD music file by DoP or native. DAC should support native DSD when native mode.
- **Clear artwork.db:** Delete LMS artwork database file. You should rescan in LMS to generate deleted file.
- **Clear config cache:** Delete LMS config cache files.

Configuration

[Check your DAC's capability.](#)

```

← → ↻ ⓘ eunhasu.local/dacinfo/

**** List of PLAYBACK Hardware Devices ****
card 0: S20 [S0tM USB Audio 2.0], device 0: USB Audio [USB Audio]
  Subdevices: 1/1
  Subdevice #0: subdevice #0

-----

Bus 004 Device 001: ID 1d6b:0001 Linux Foundation 1.1 root hub
Bus 002 Device 003: ID 20b1:2102 XMOS Ltd
Bus 002 Device 001: ID 1d6b:0002 Linux Foundation 2.0 root hub
Bus 003 Device 001: ID 1d6b:0001 Linux Foundation 1.1 root hub
Bus 001 Device 002: ID 05e3:0610 Genesys Logic, Inc. 4-port hub
Bus 001 Device 001: ID 1d6b:0002 Linux Foundation 2.0 root hub

-----

0 [S20          ]: USB-Audio - S0tM USB Audio 2.0
                   S0tM S0tM USB Audio 2.0 at usb-1c1c000.usb-1, high speed

-----

S0tM S0tM USB Audio 2.0 at usb-1c1c000.usb-1, high speed : USB Audio

Playback:
Status: Stop
Interface 1
  Altset 1
  Format: S32_LE
  Channels: 2
  Endpoint: 1 OUT (ASYNC)
  Rates: 44100, 48000, 88200, 96000, 176400, 192000, 352800, 384000
  Data packet interval: 125 us

```

Input 'Max samplerate' and 'Sample format' by DAC information. Please refer to highlighted part.

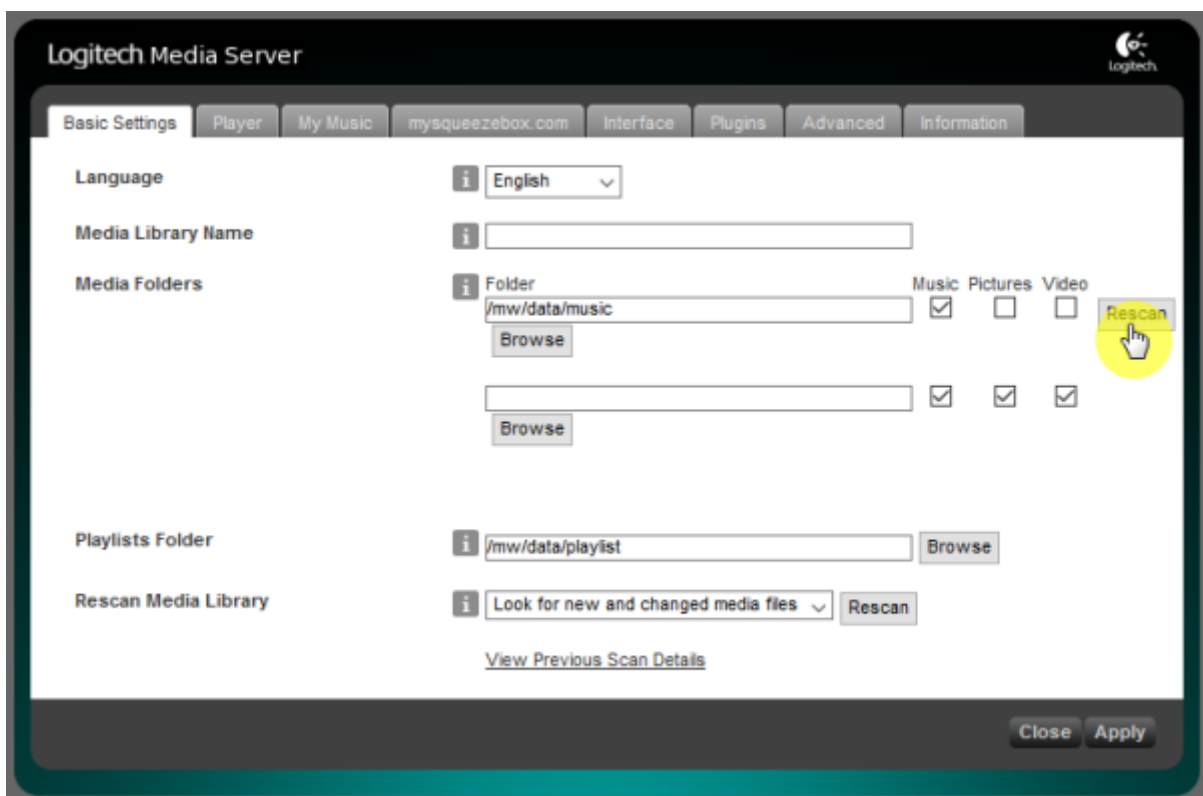
S0tM USB Audio 2.0		S20	
DSD mode	None	Buffer time	80
Max samplerate	384000	Internal buffer	4096
		Period count	16
		Sample format	32

LMS library rescan guide

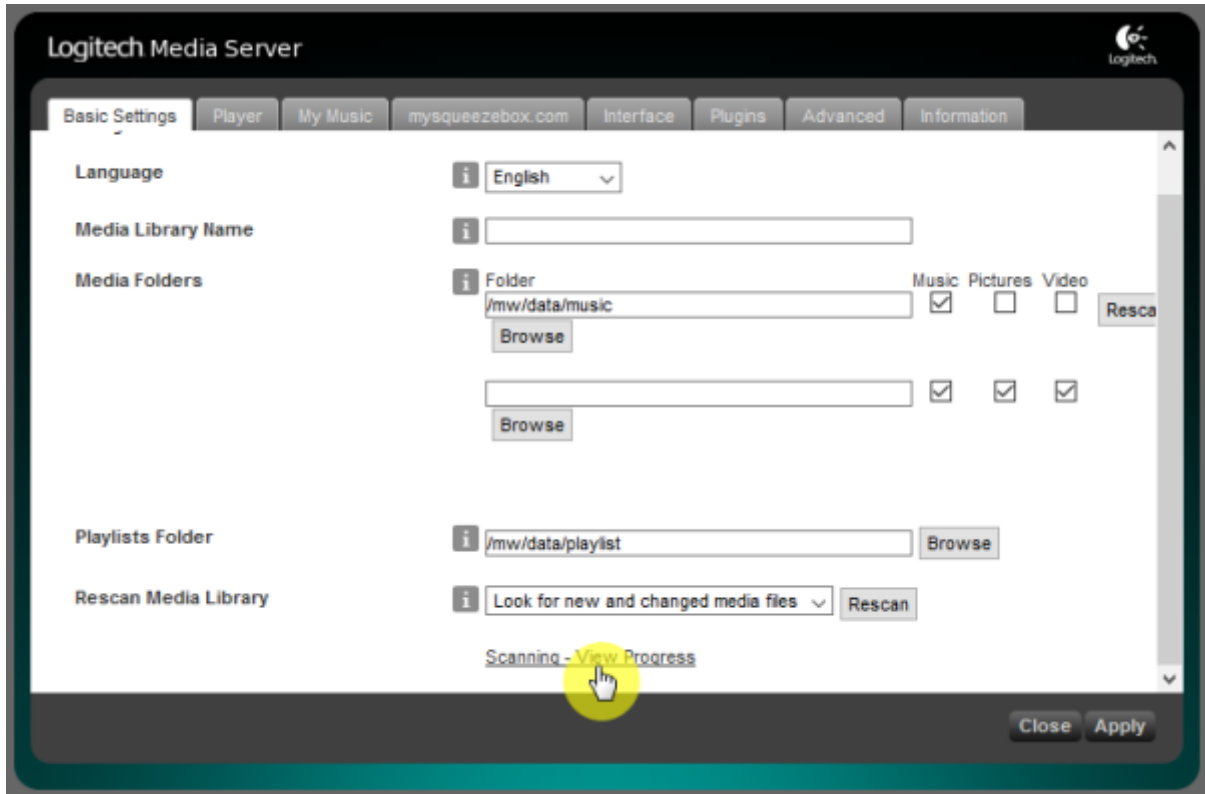
Move on to Settings menu page.



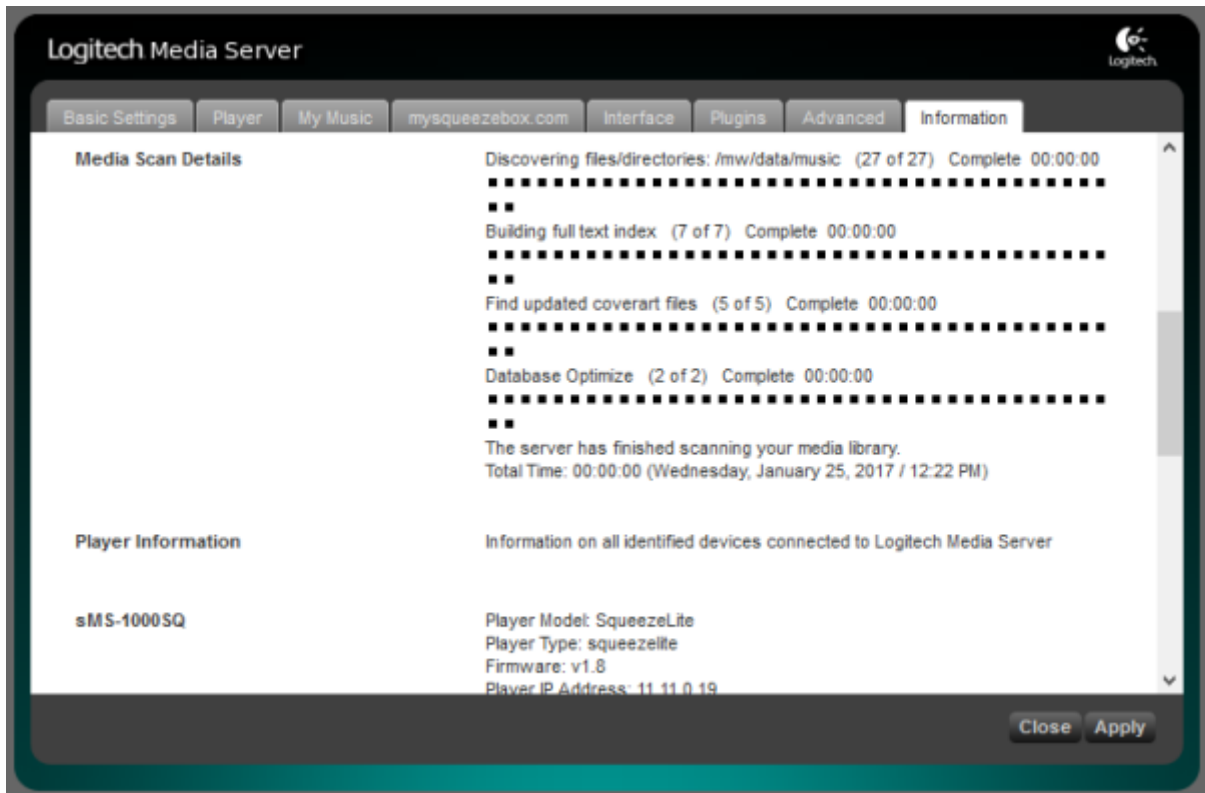
Click "Rescan" button to start scan on Basic Settings tab.



Click "Scanning - View Progress" link at bottom of page if you'd like to see scanning states.



Scanning states screen.

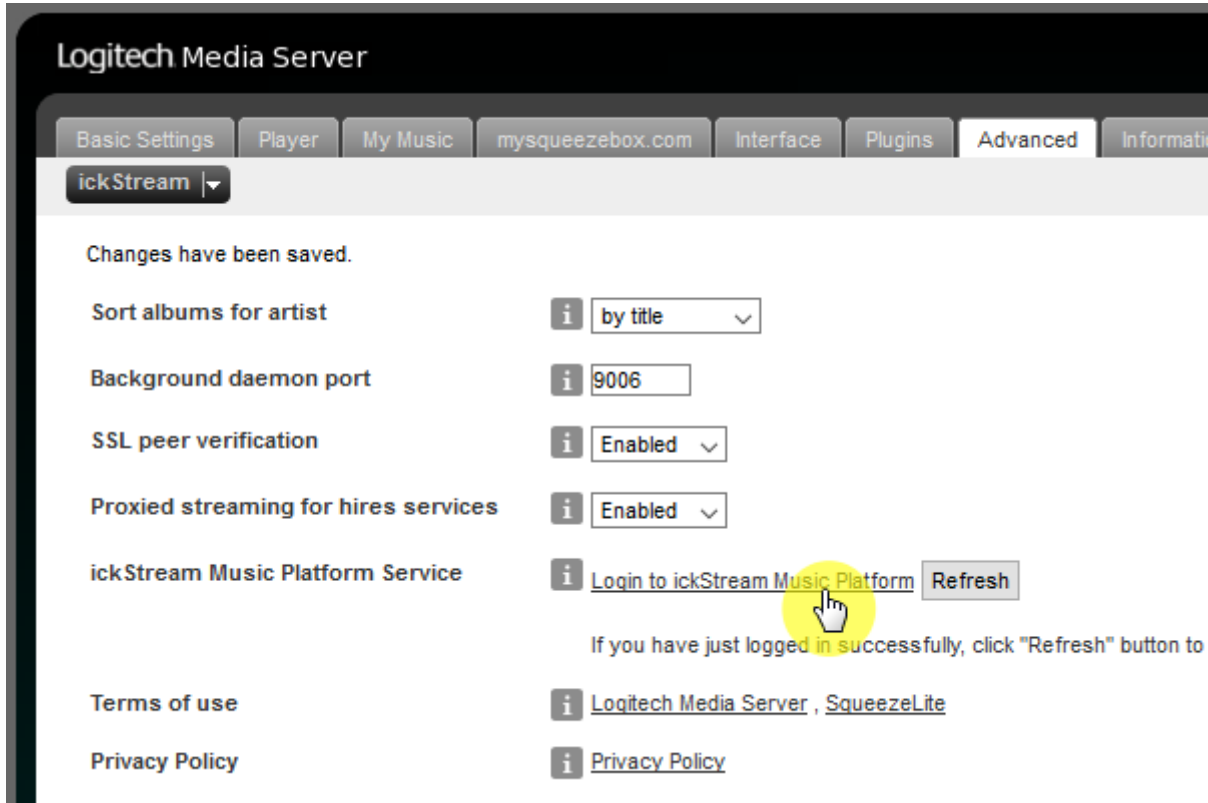


ickStream

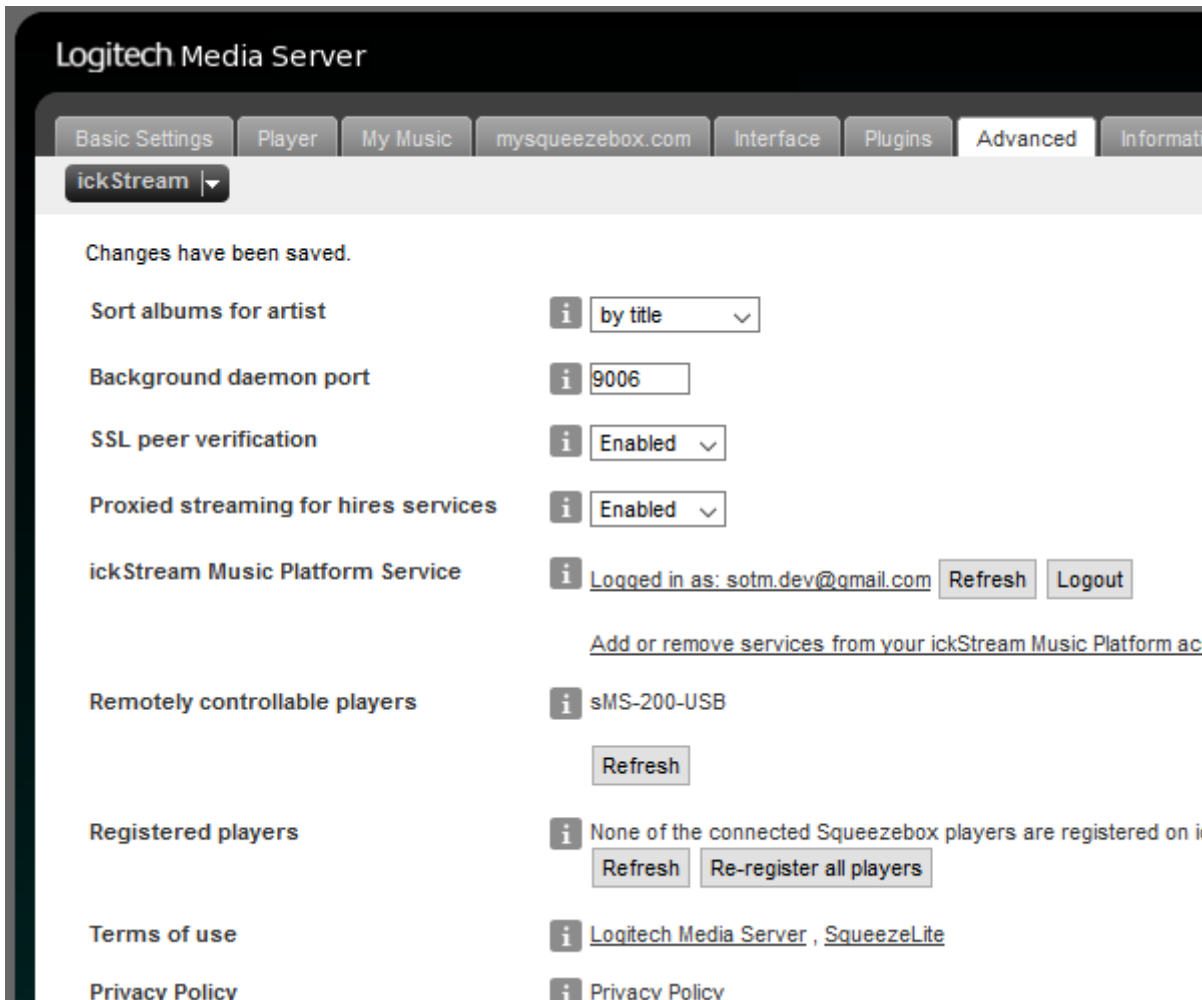
ickStream plugin provides lots of third-party feature like Quboz, TIDAL. You can check more information about ickStream in the link,

- http://wiki.ickstream.com/index.php/Open_Beta_Squeezebox_Installation

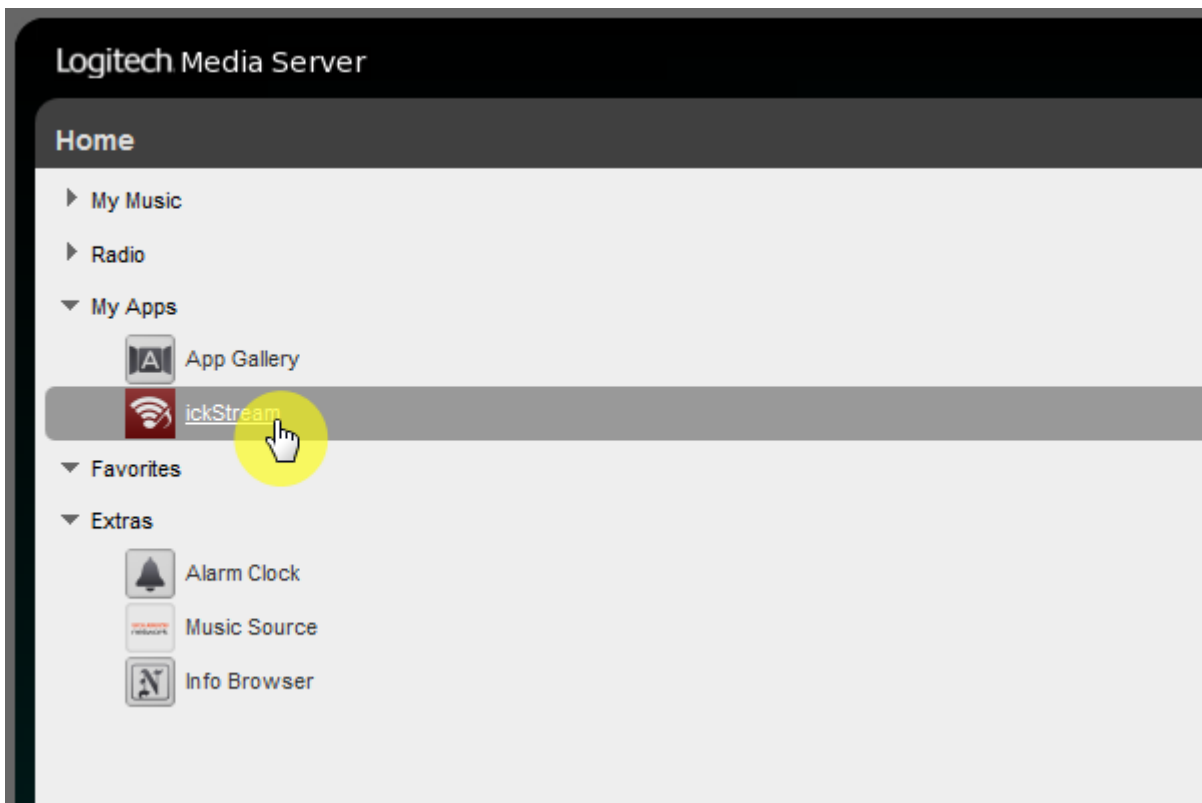
After finishing ickStream plugin installation, you have to agree EULA and login ickStream in LMS > Settings > Advanced > ickStream page.

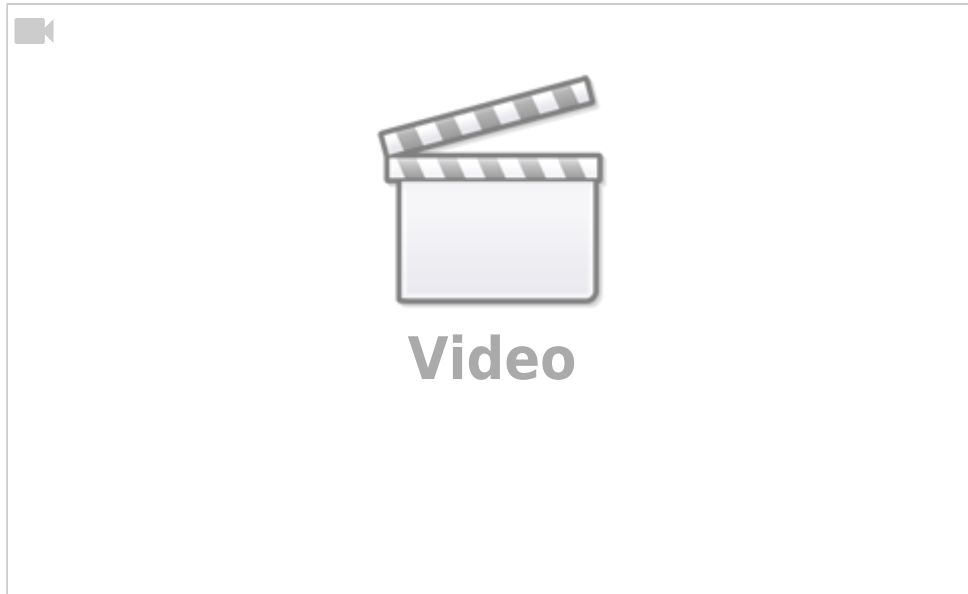


Login complete.



You can see ickStream item in My Apps of LMS main screen.





Video: how to install and set Spotify plugin in LMS; Spotify premium account required.

From:

<https://docs.sotm-audio.com/> - **SOTM docs**

Permanent link:

<https://docs.sotm-audio.com/doku.php?id=en:squeezelite&rev=1521030570>

Last update: **2018/03/14 08:29**

