

mSD

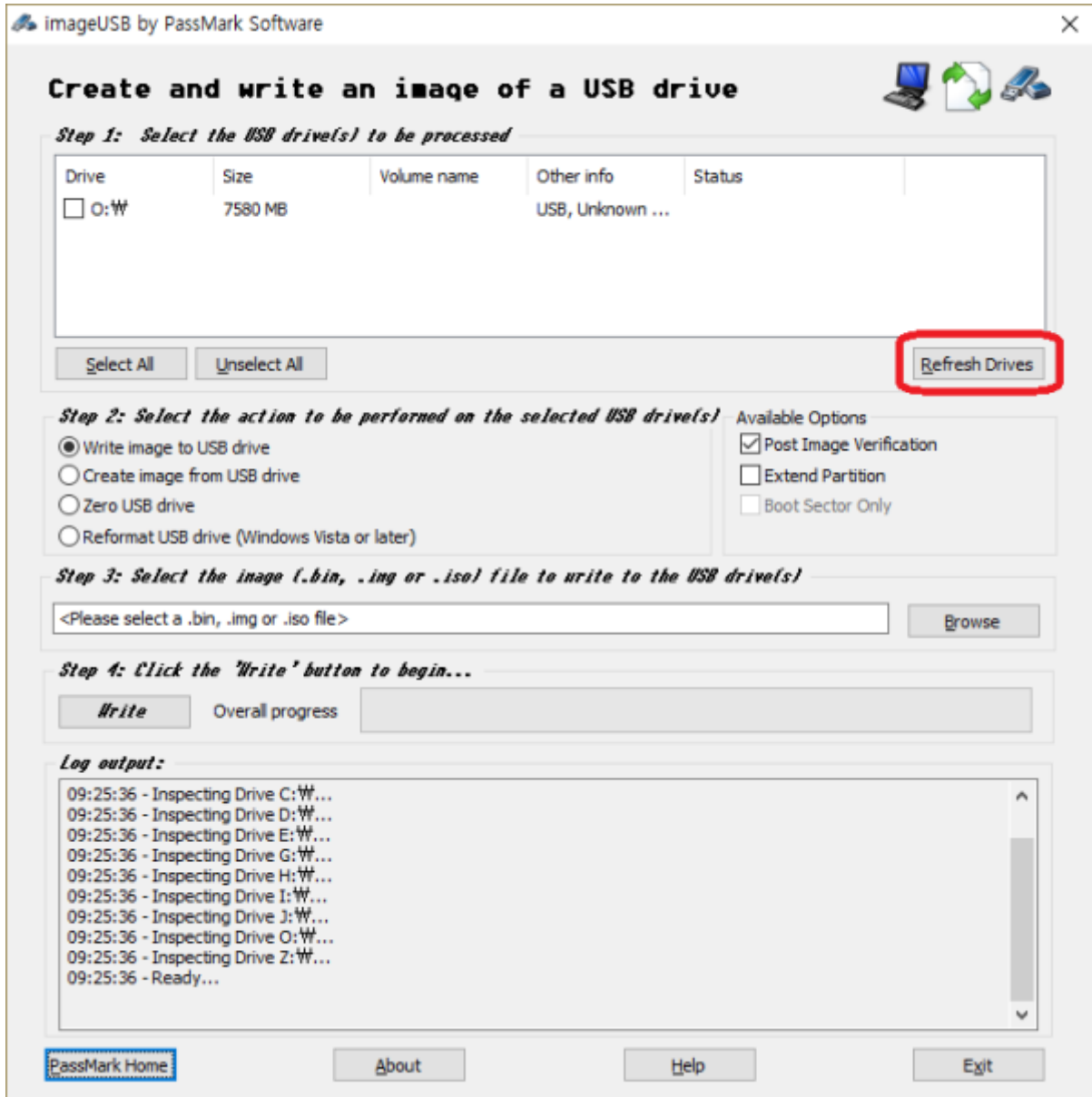
micro SD

Windows

1. SD (3.0 GB .gz) [new micro SD card image](#)
2. SD (7.9 GB .img)
3. PC [imageUSB](#) ,
4. SMS-200 SD PC

imageUSB

[imageUSB](#) , USB 가 ,
 'Refresh Drives' .

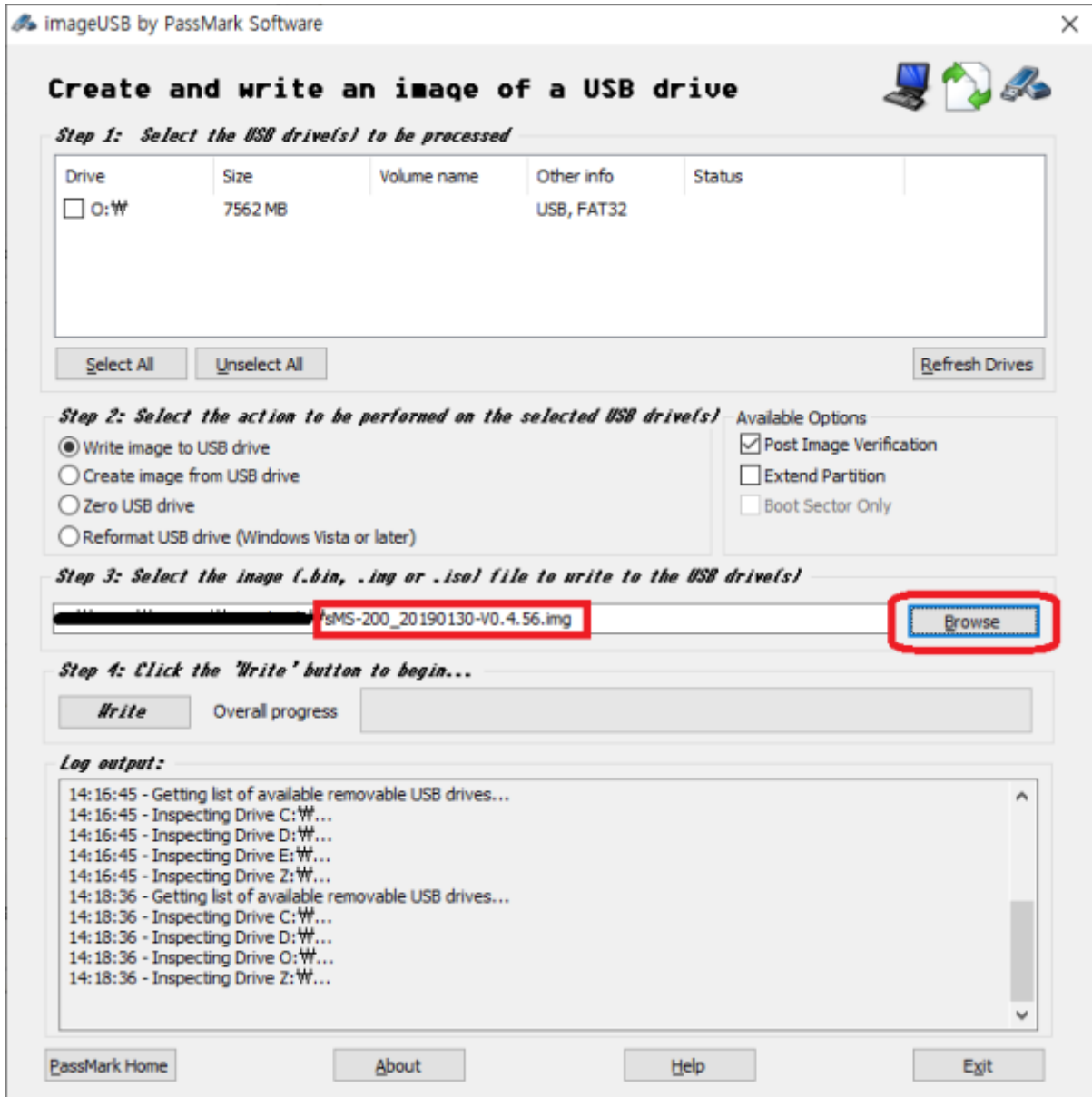


USB

USB



'Browse'



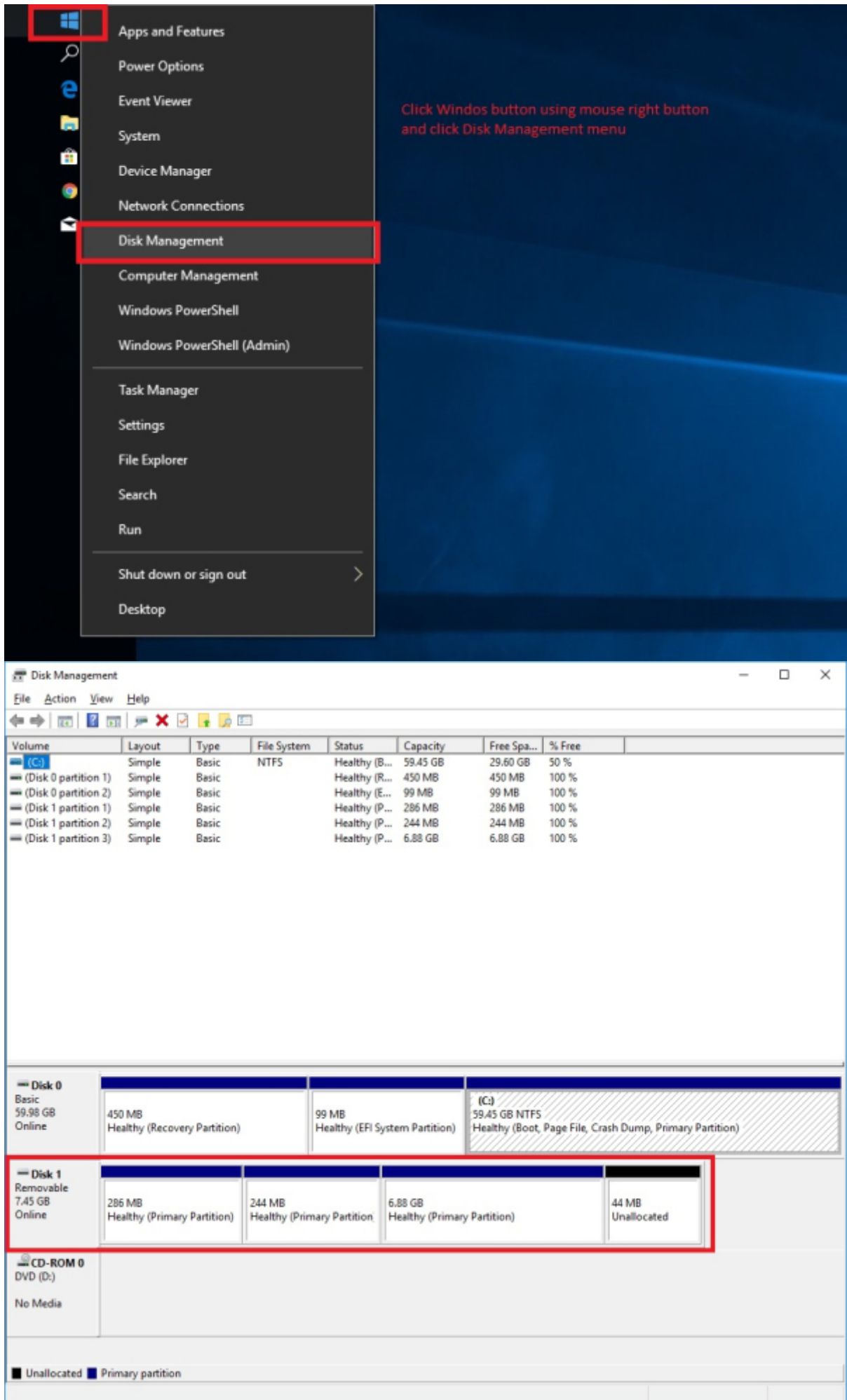
'Write'

SD



1. 가 SD SMS-200
2. SMS-200

SD



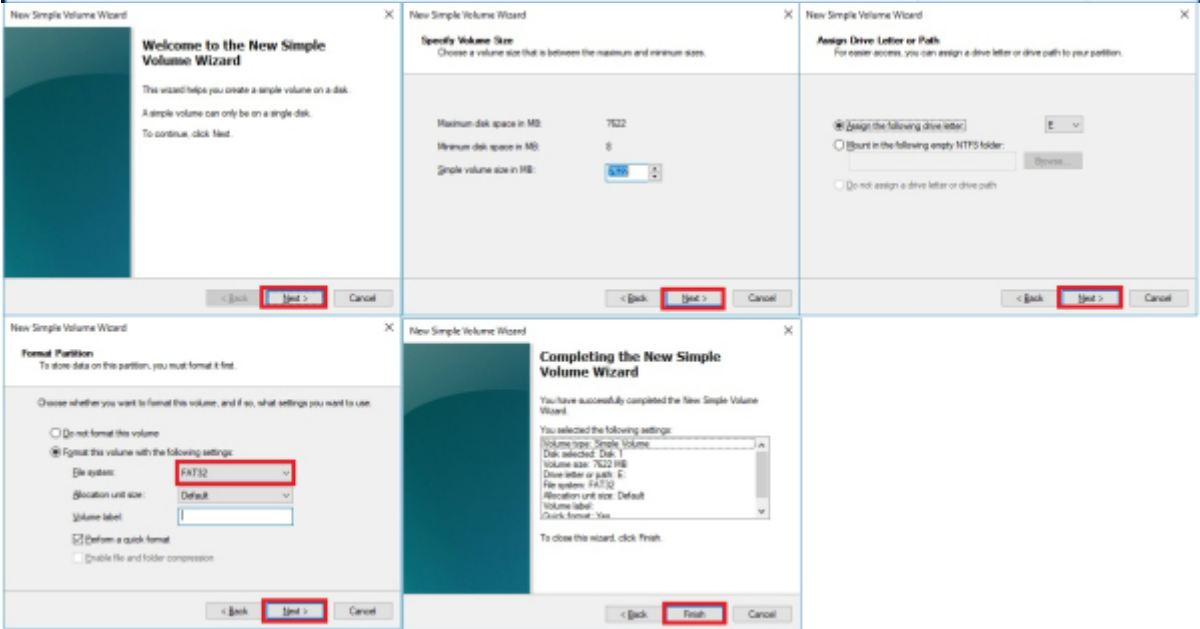
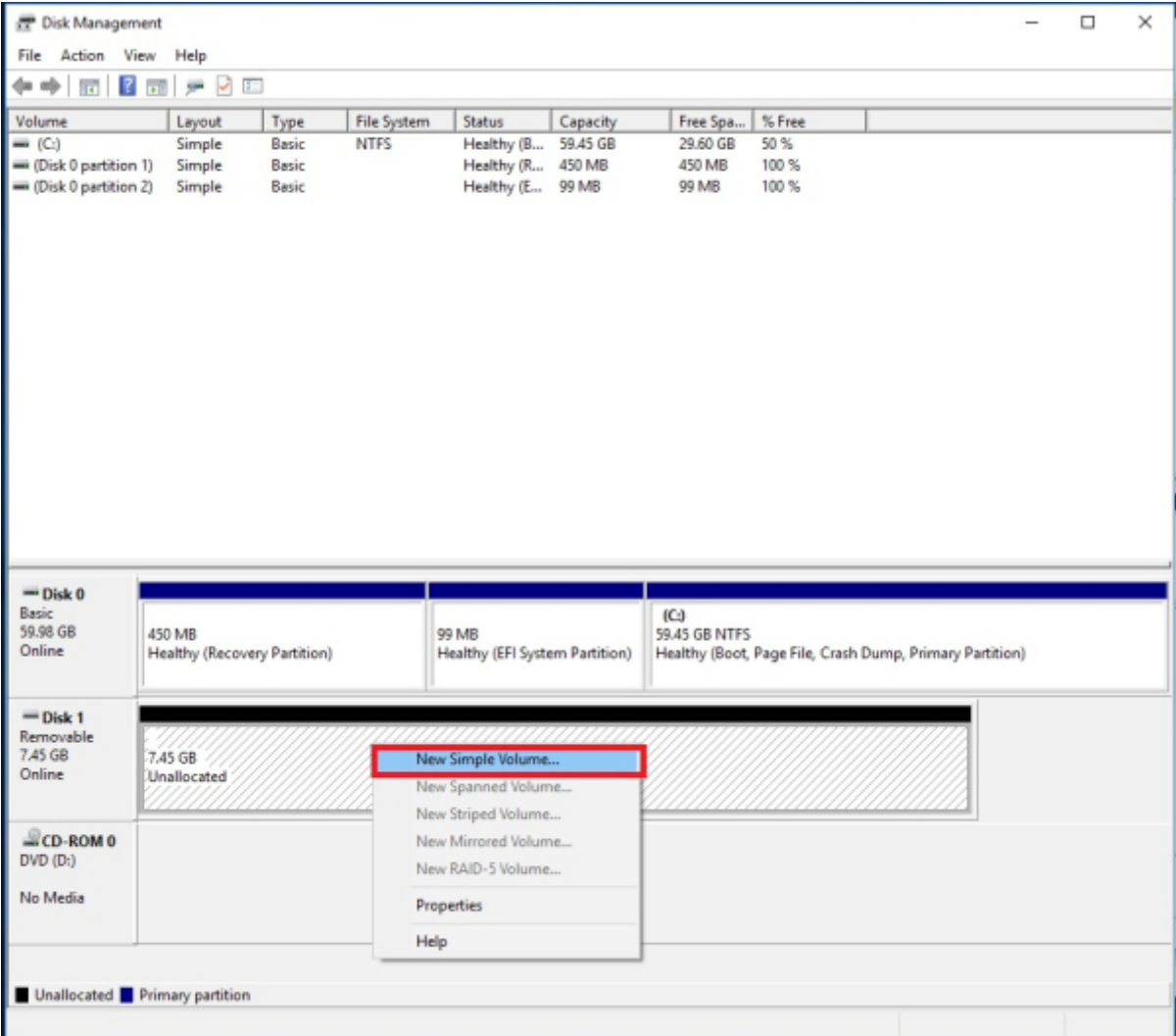
The screenshot shows the Windows Disk Management utility. At the top, there is a table listing various volumes. Below this, the details for Disk 1 are shown, including a context menu that is open over the 6.88 GB partition. The 'Delete Volume...' option in the menu is highlighted with a red box. A red text overlay provides instructions on how to delete the volume.

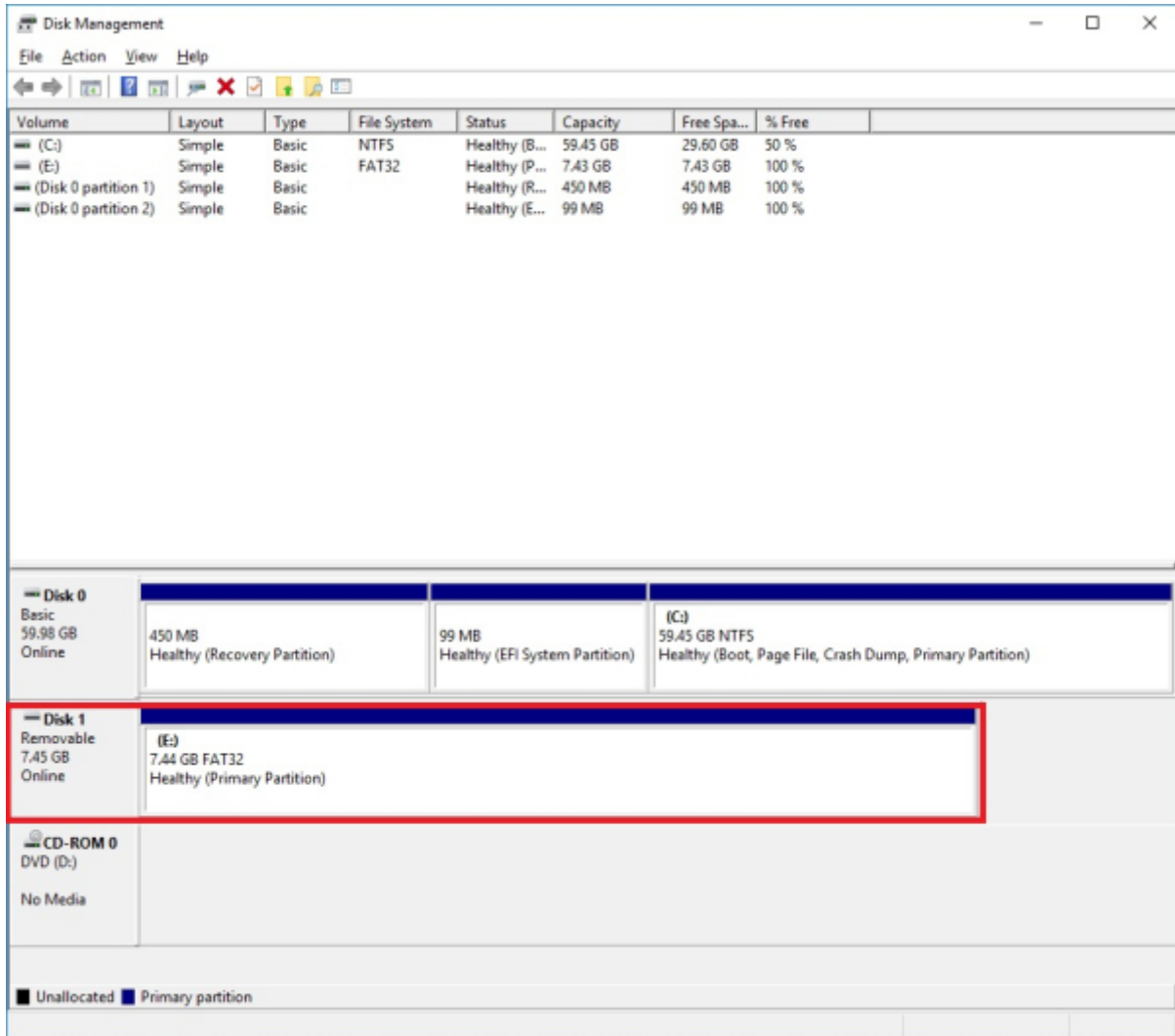
Volume	Layout	Type	File System	Status	Capacity	Free Spa...	% Free
(C:)	Simple	Basic	NTFS	Healthy (B...	59.45 GB	29.60 GB	50 %
(Disk 0 partition 1)	Simple	Basic		Healthy (R...	450 MB	450 MB	100 %
(Disk 0 partition 2)	Simple	Basic		Healthy (E...	99 MB	99 MB	100 %
(Disk 1 partition 1)	Simple	Basic		Healthy (P...	286 MB	286 MB	100 %
(Disk 1 partition 2)	Simple	Basic		Healthy (P...	244 MB	244 MB	100 %
(Disk 1 partition 3)	Simple	Basic		Healthy (P...	6.88 GB	6.88 GB	100 %

Disk	Partition 1	Partition 2	Partition 3	Partition 4
Disk 0 Basic 59.98 GB Online	450 MB Healthy (Recovery Partition)	99 MB Healthy (EFI System Partition)	(C:) 59.45 GB NTFS Healthy (Boot, Page File, Crash Dump, Primary Partition)	
Disk 1 Removable 7.45 GB Online	286 MB Healthy (Primary Partition)	244 MB Healthy (Primary Partition)	6.88 GB Healthy (Primary Partition)	44 MB Unallocated

Click right button of mouse
Delete Volume 3 patitions of Disk1(mSD CARD)
It will be changed to 1 of unallocated disk

Delete Volume...



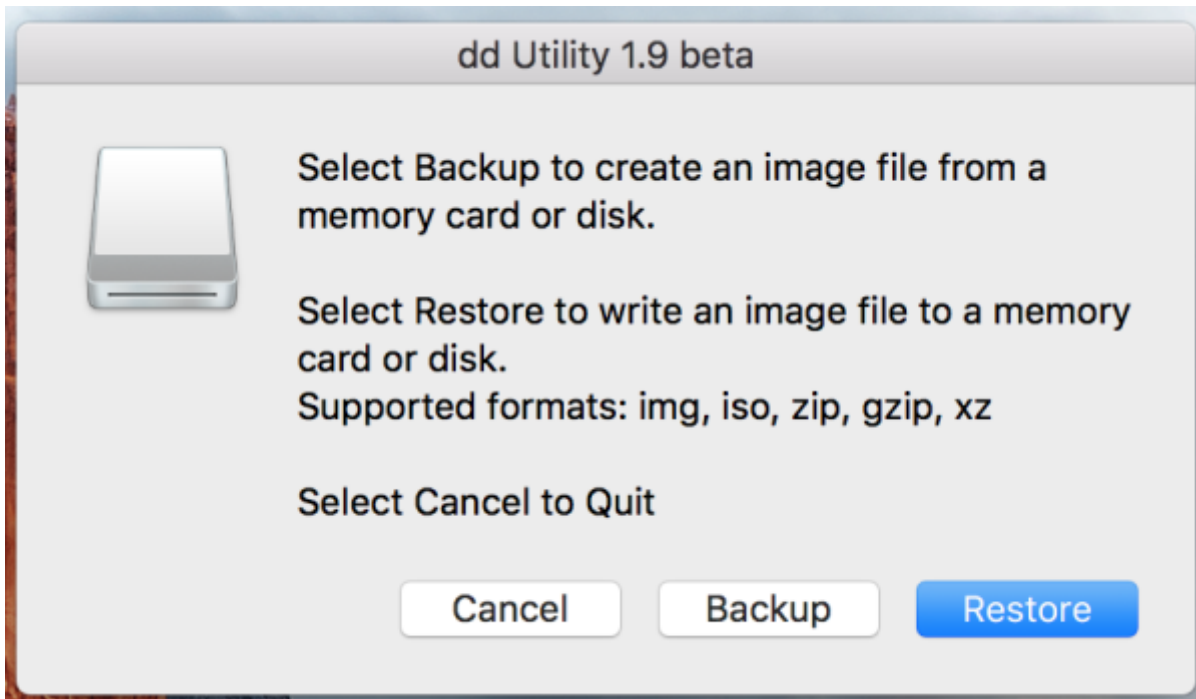


macOS

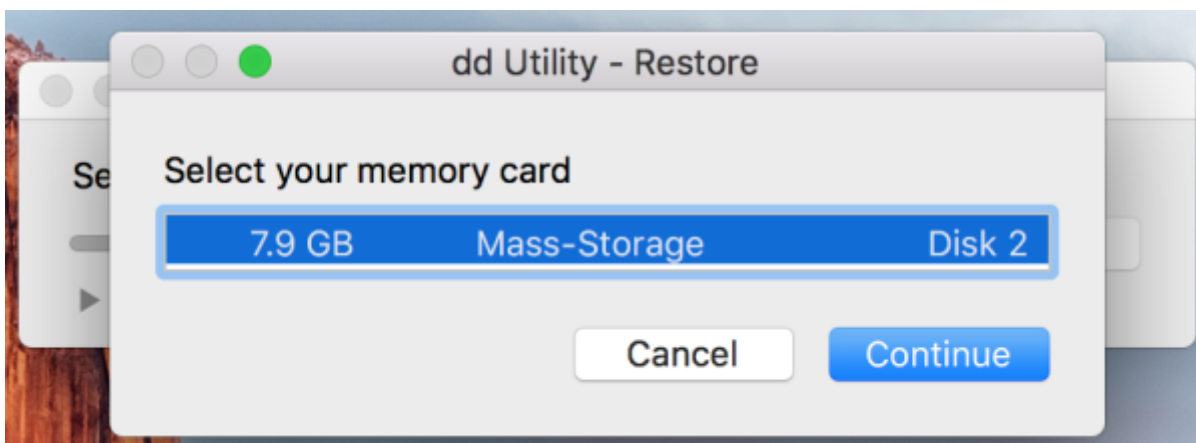
1. SD (3.0 GB .gz) new micro SD card image
<https://www.thefanclub.co.za> [github](#)
2. dd-utility
3. SMS-200 SD PC SD

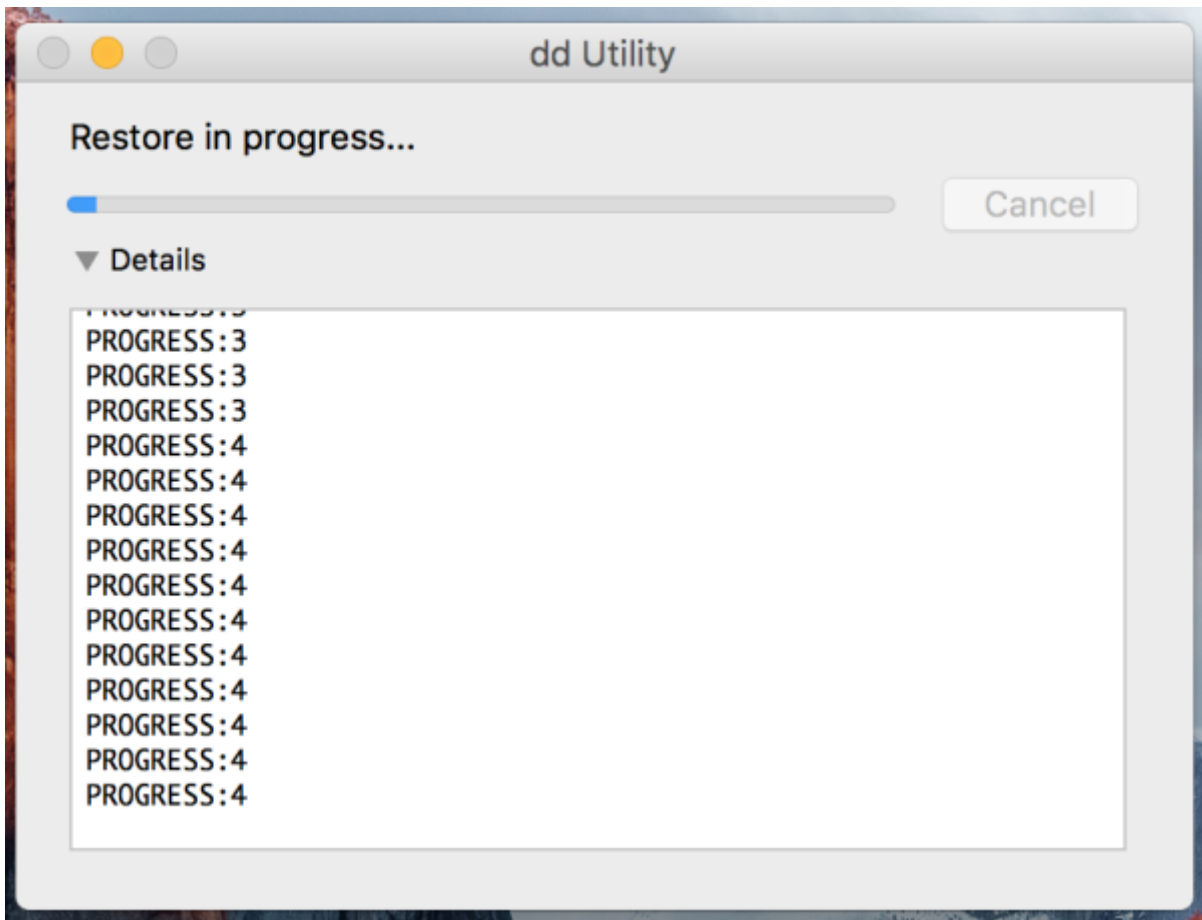
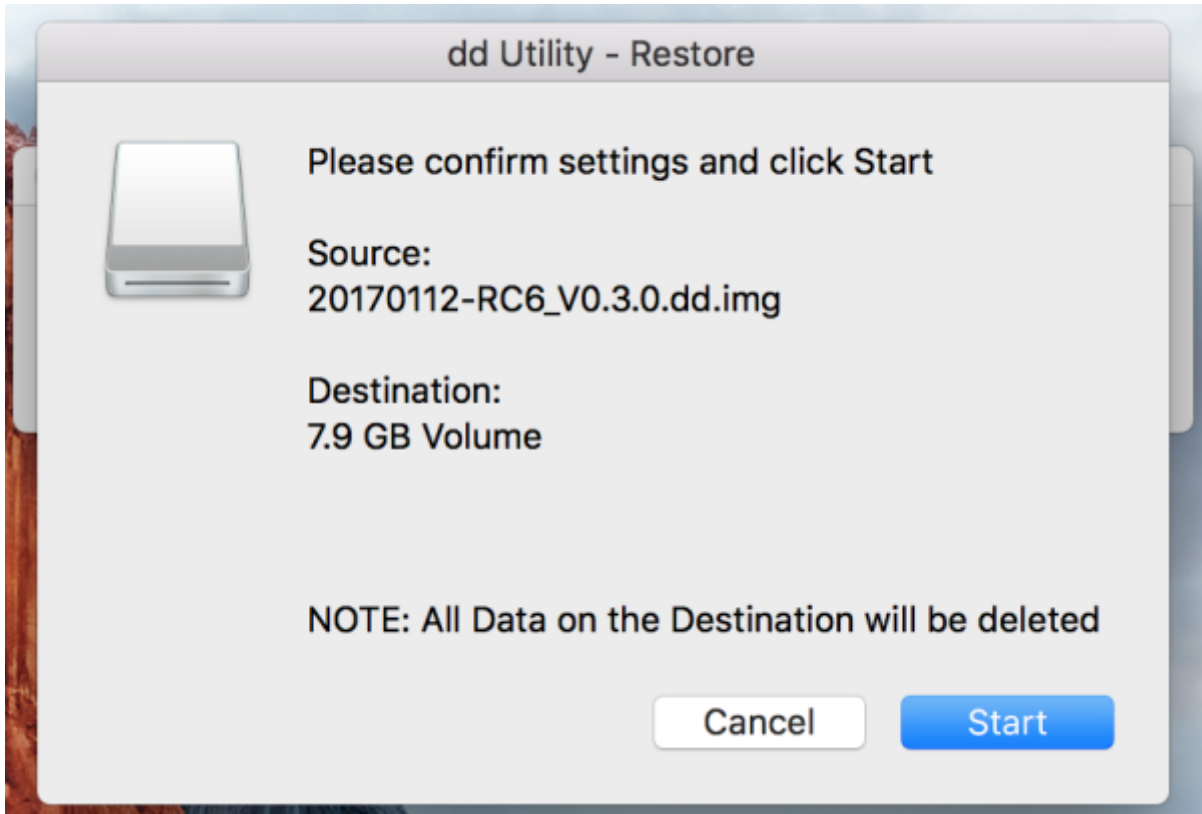
Start Restore

dd-utility 'Restore' .img



SD





sMS-200

SD

dd-utility

- [imageUSB for Windows](#)
- [dd-utility for macOS](#)

micro SD card

Eunhasu

. info@sotm-audio.com

From:
<https://docs.sotm-audio.com/> - **SOTM docs**

Permanent link:
https://docs.sotm-audio.com/doku.php?id=ko:eunhasu:burn_sdcard_image

Last update: **2025/10/16 00:48**

