

- SMS-200 V0.3.0 SMS-1000SQ Eunhasu V0.3.0
- Wifi dongle
 - RTL8812AU

Simple Instruction

USB

Wifi USB

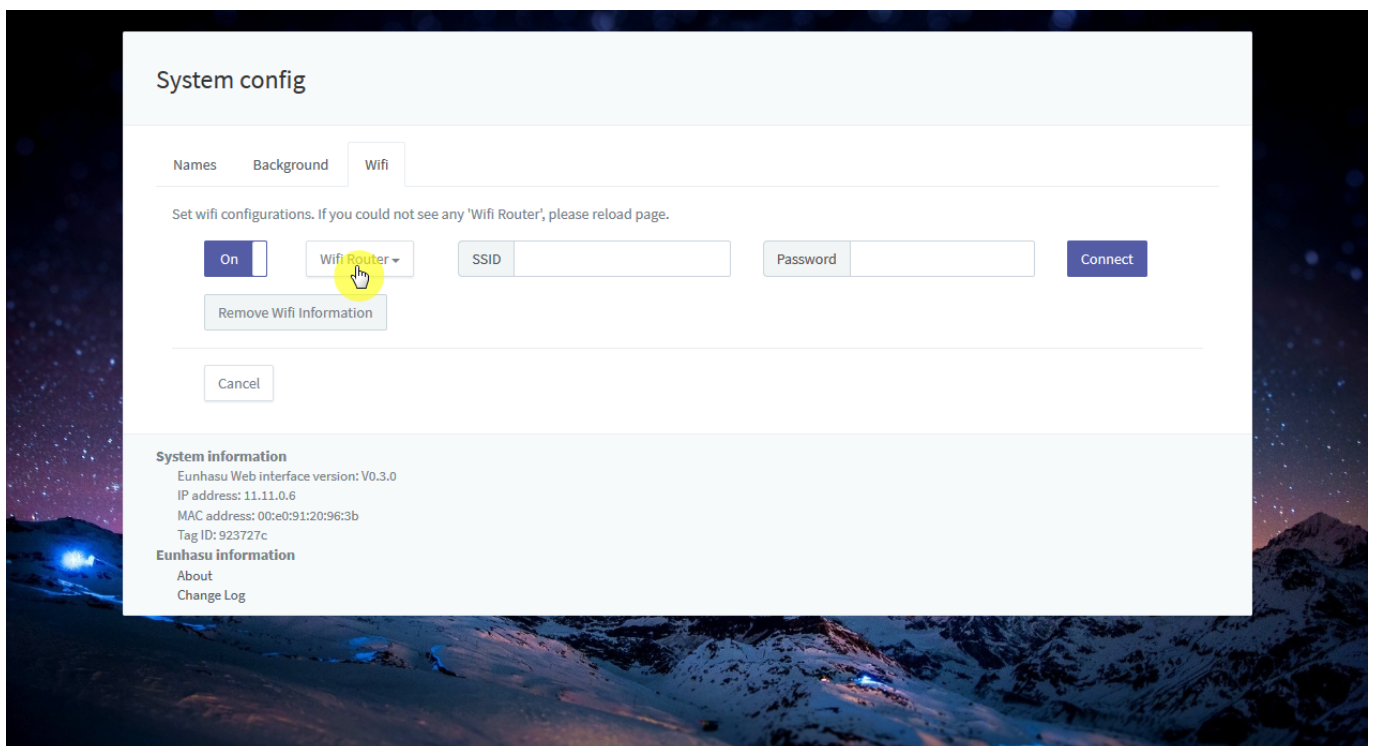


System config

'Wifi'

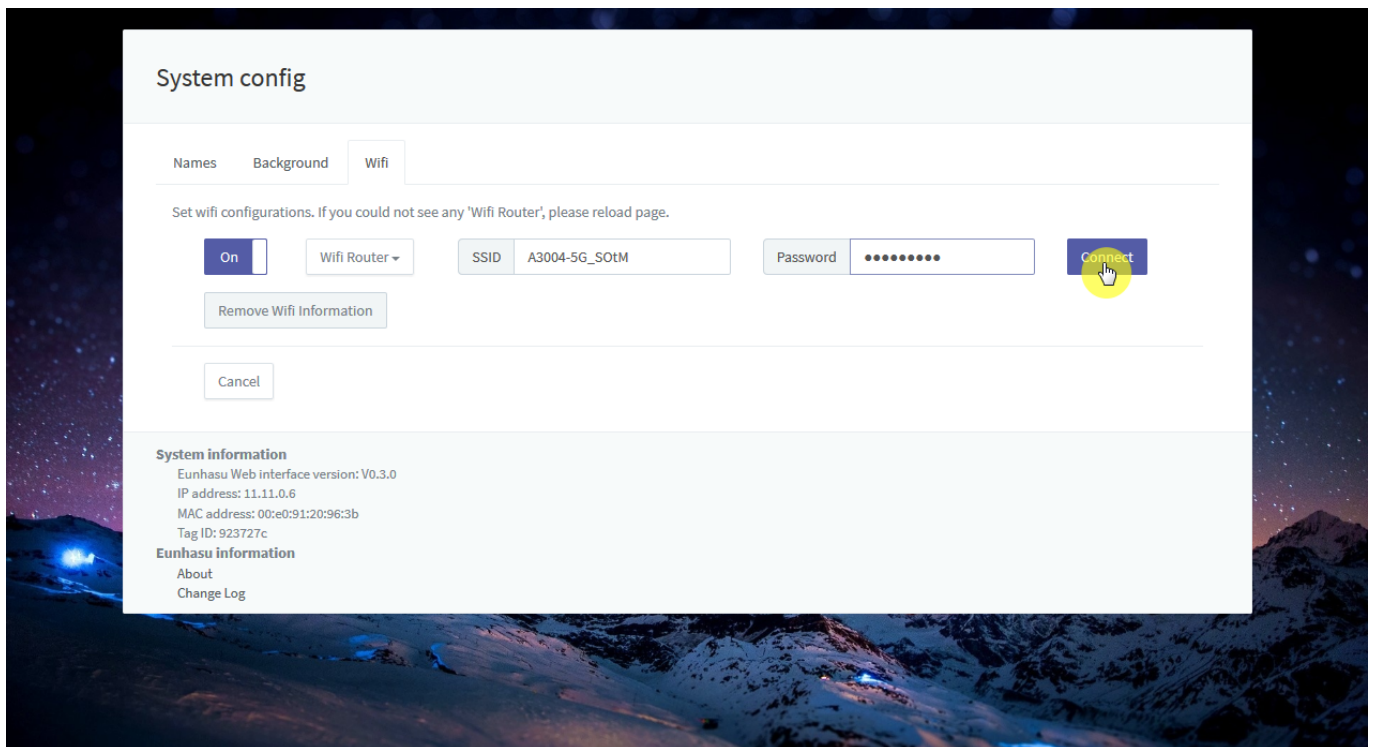


'Wifi Router'



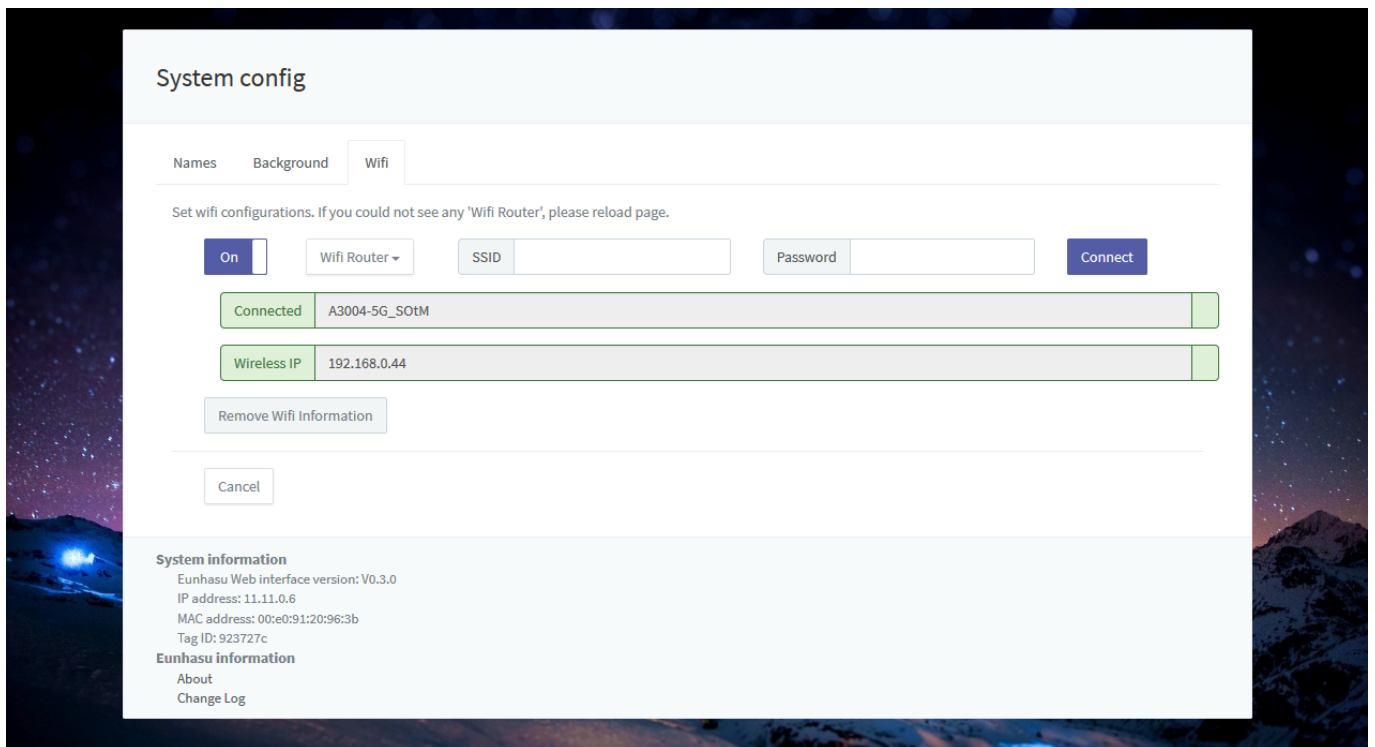


'Connect'



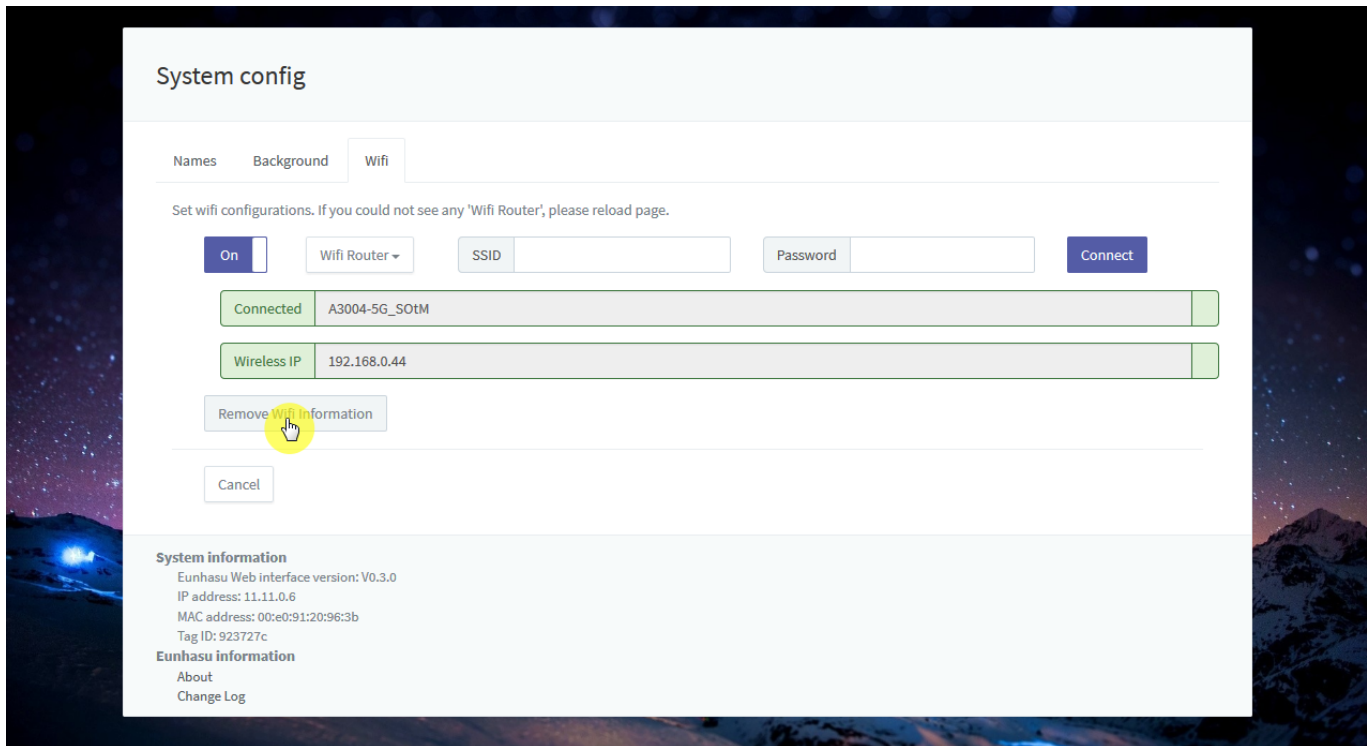



IP



'Remove Wifi Information'

AP 가





- Eunhasu V0.3.0
- 가
- 가

From:
<https://docs.sotm-audio.com/> - **SOTM docs**

Permanent link:
https://docs.sotm-audio.com/doku.php?id=ko:how_to_use_wifi_in_eunhasu&rev=1484880969

Last update: **2017/01/19 21:56**

