

- SMS-200 V0.3.0      SMS-1000SQ Eunhasu V0.3.0
- Wifi dongle
  - RTL8812AU

## Simple Instruction

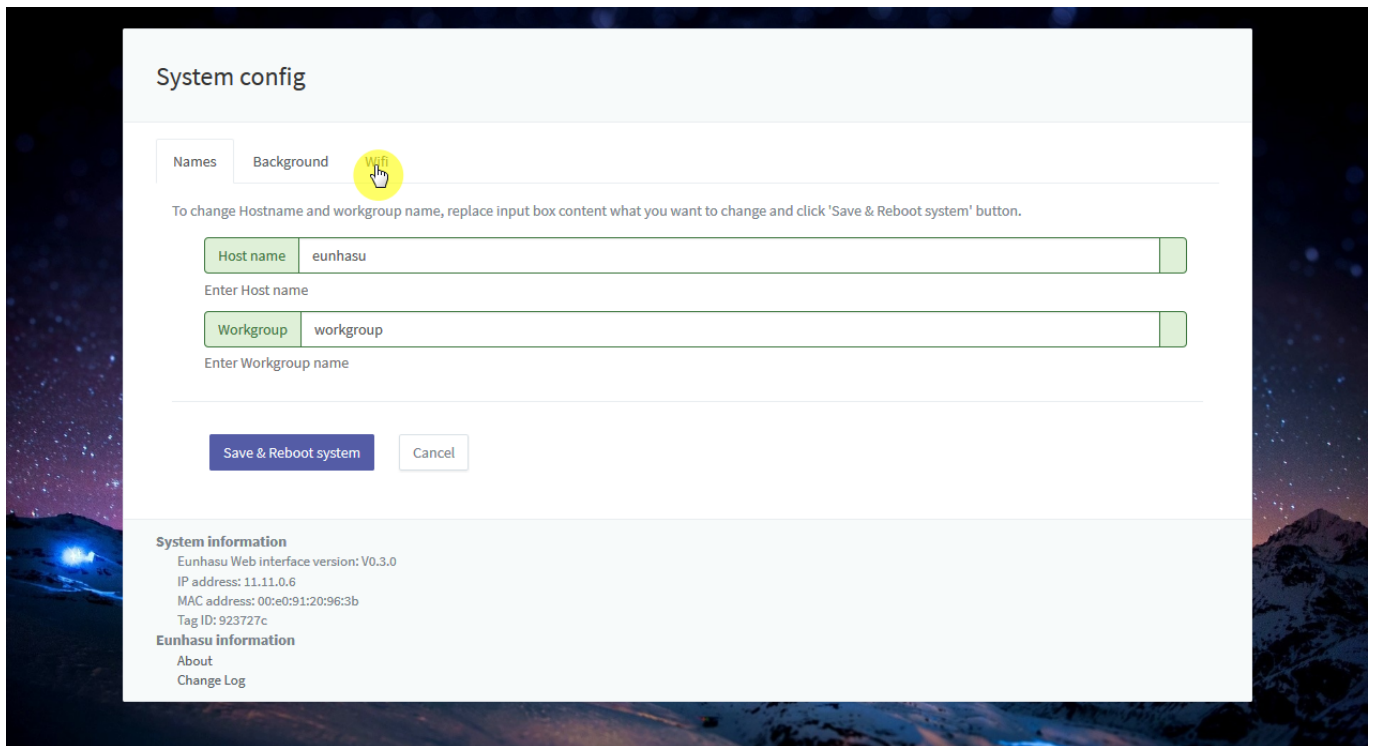
USB

Wifi USB

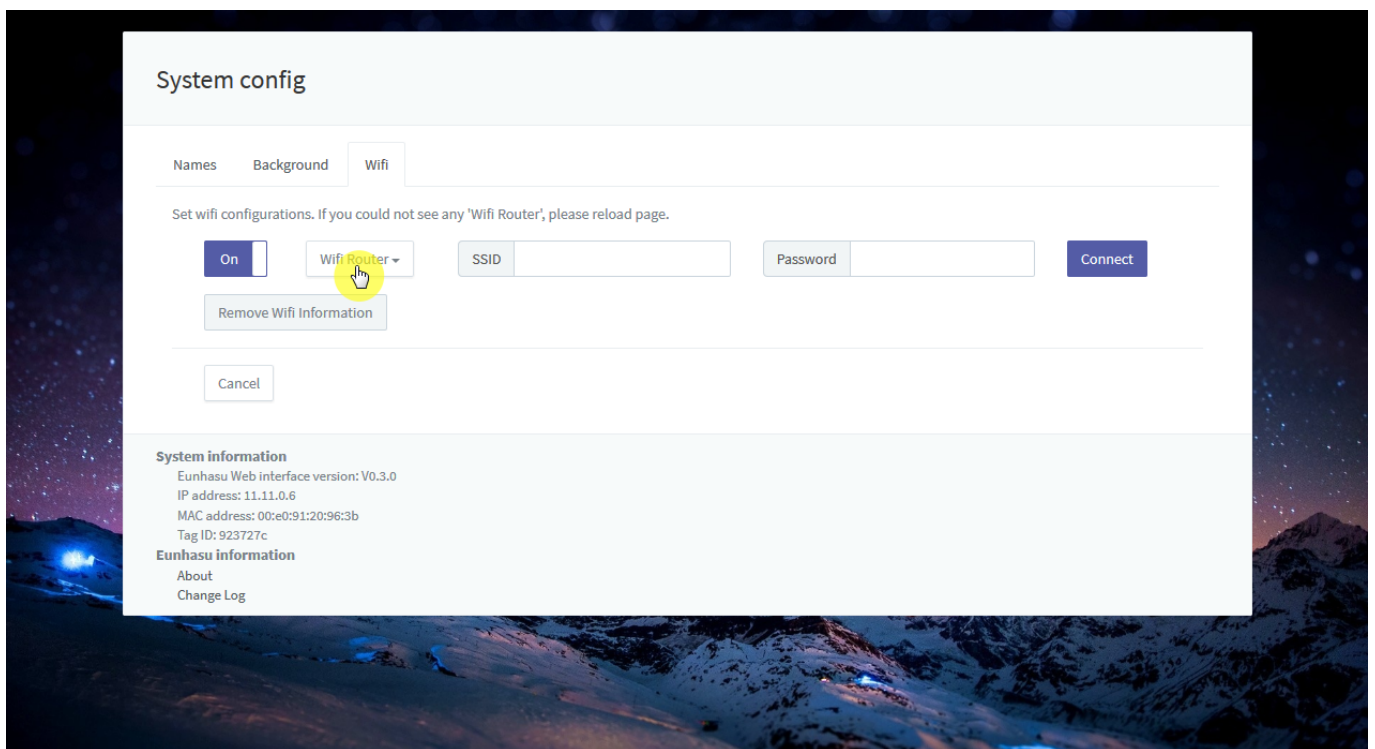


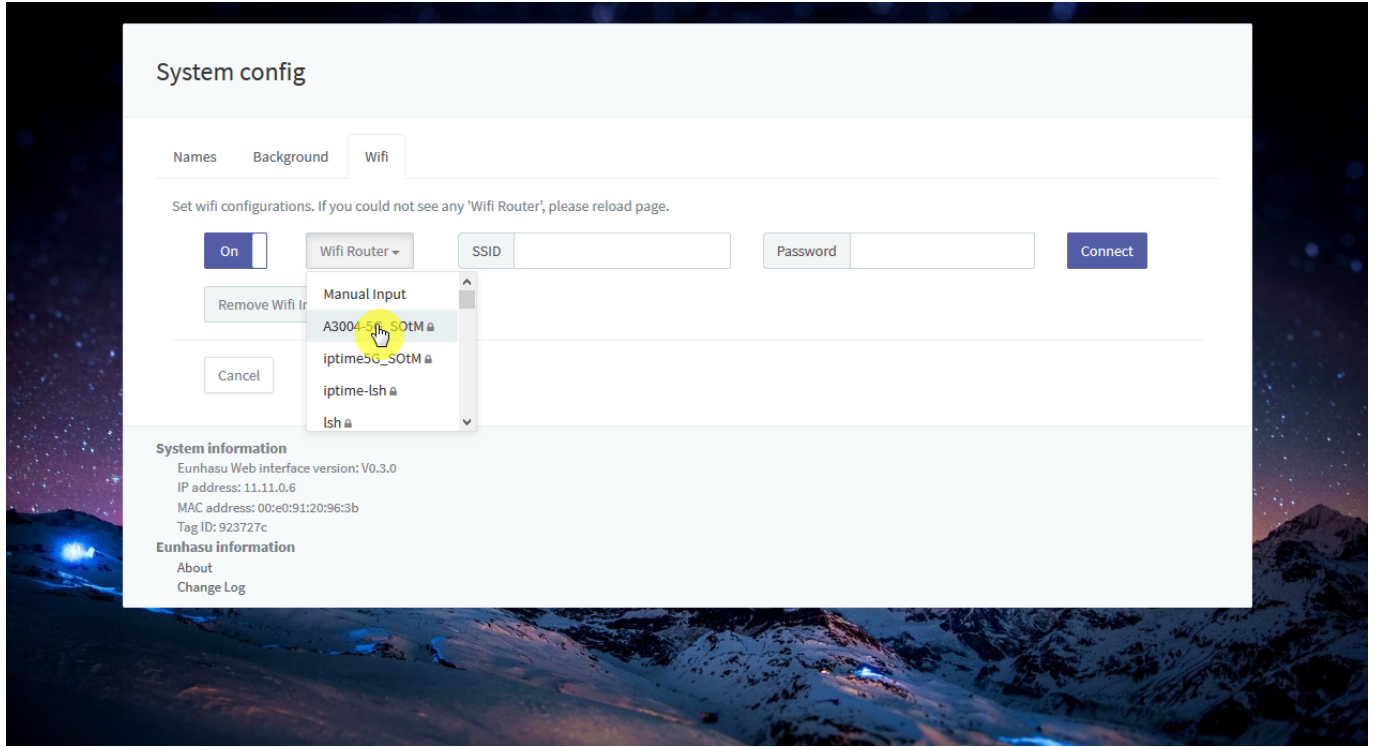
System config

'Wifi'

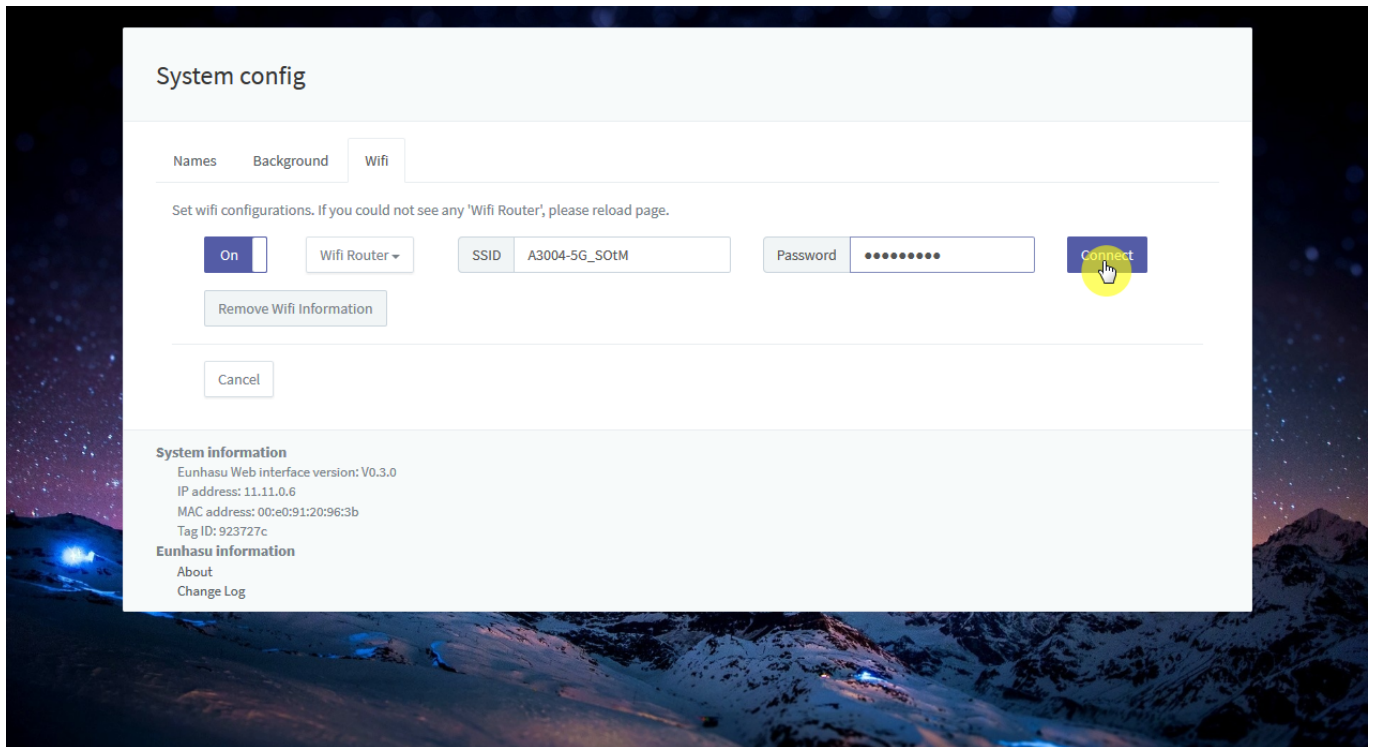


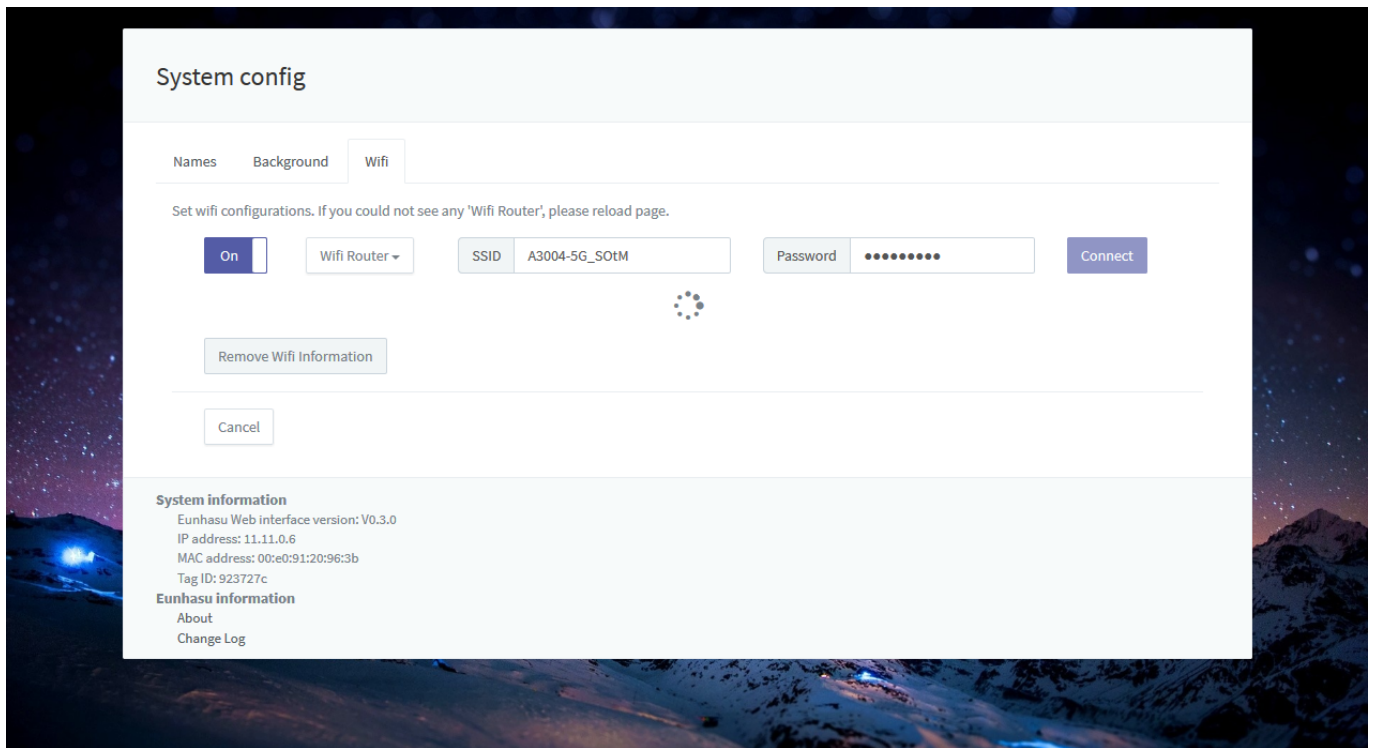
## 'Wifi Router'



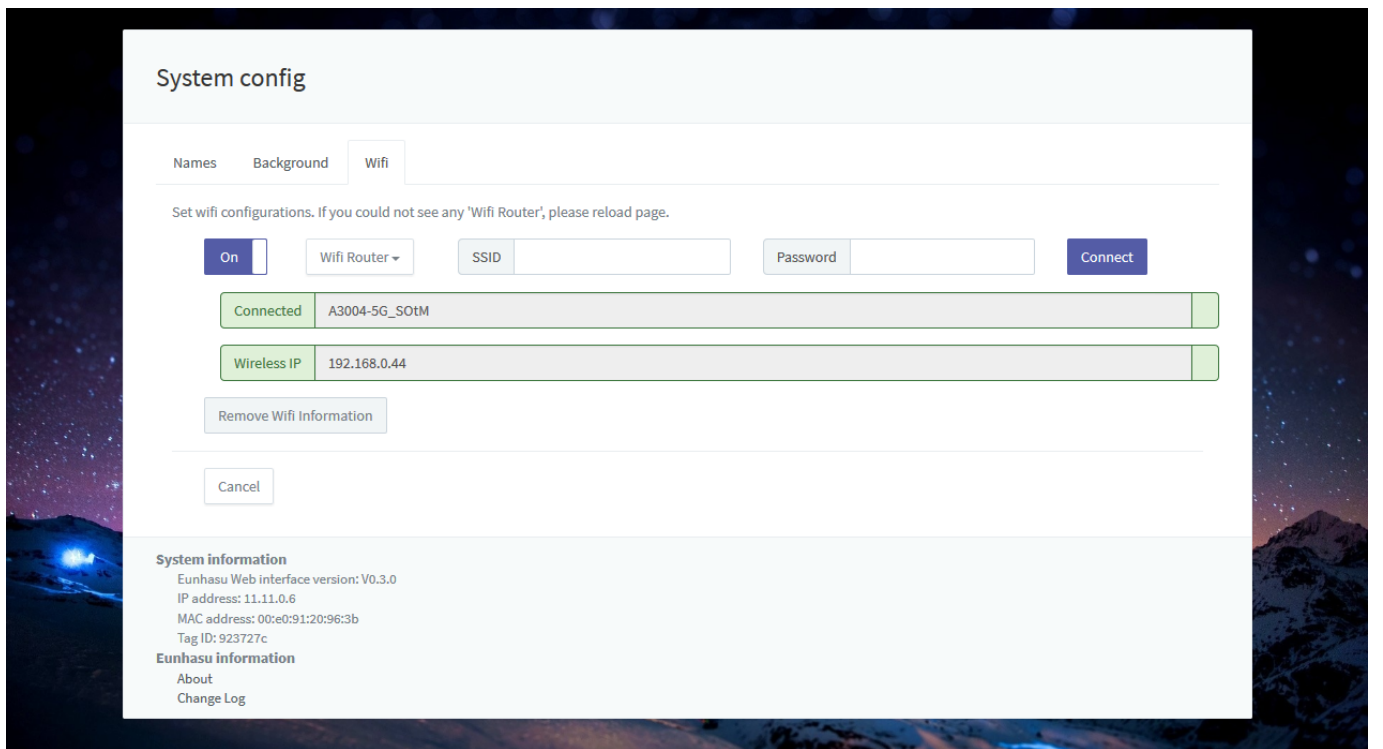


'Connect'



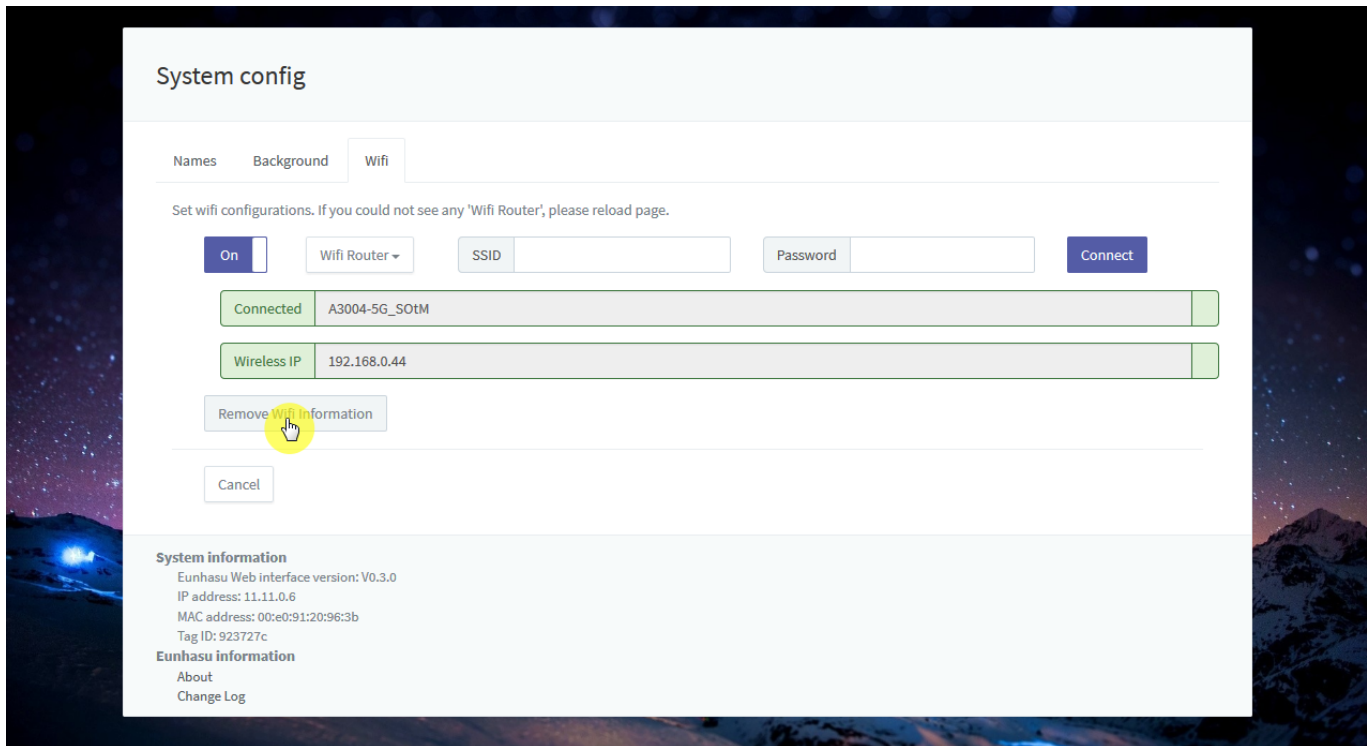



IP



'Remove Wifi Information'

AP 가





- Eunhasu V0.3.0
- 가
- 가

Last Updated: 2017/01/19 22:01

From:  
<https://docs.sotm-audio.com/> - **SOTM docs**

Permanent link:  
[https://docs.sotm-audio.com/doku.php?id=ko:how\\_to\\_use\\_wifi\\_in\\_eunhasu&rev=1484881309](https://docs.sotm-audio.com/doku.php?id=ko:how_to_use_wifi_in_eunhasu&rev=1484881309)

Last update: **2017/01/19 22:01**

