

- SMS-200 V0.3.0      SMS-1000SQ Eunhasu V0.3.0
- Wifi dongle
  - RTL8812AU

## Simple Instruction

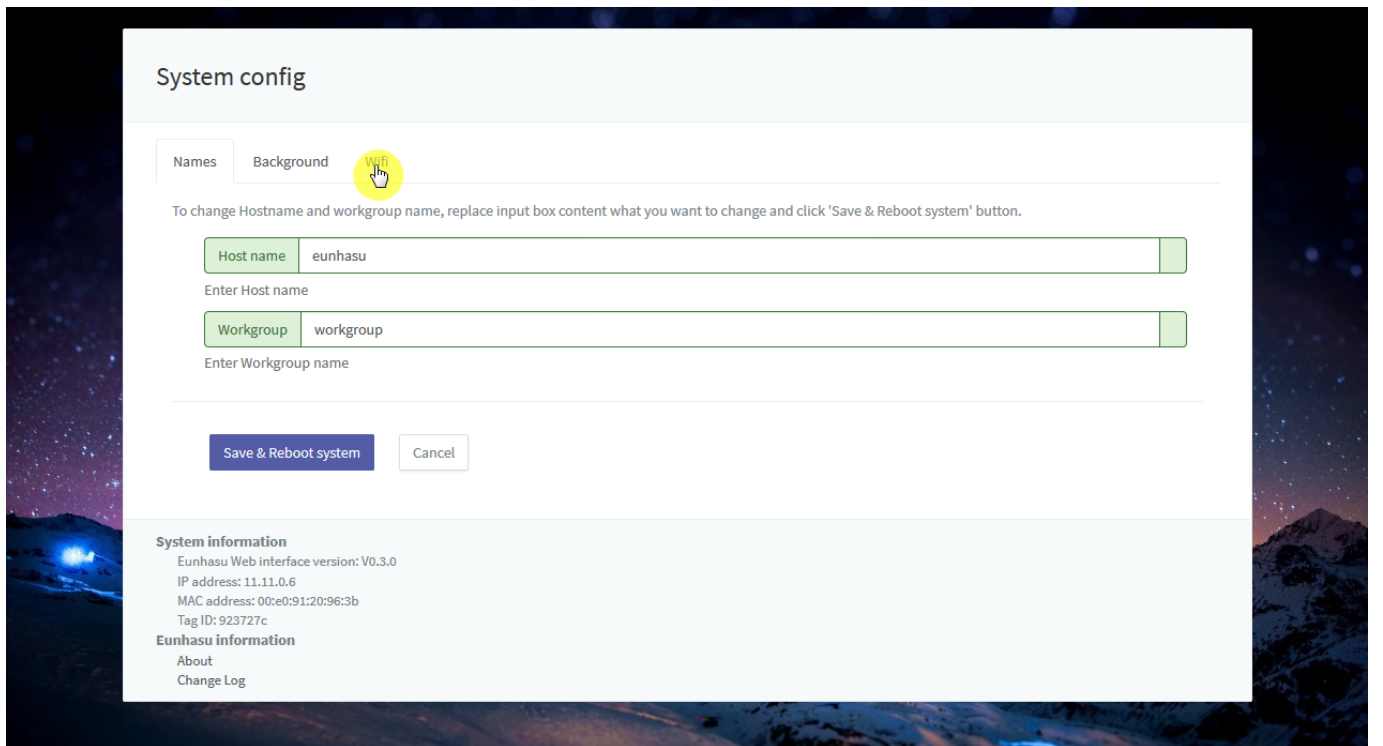
USB

Wifi USB

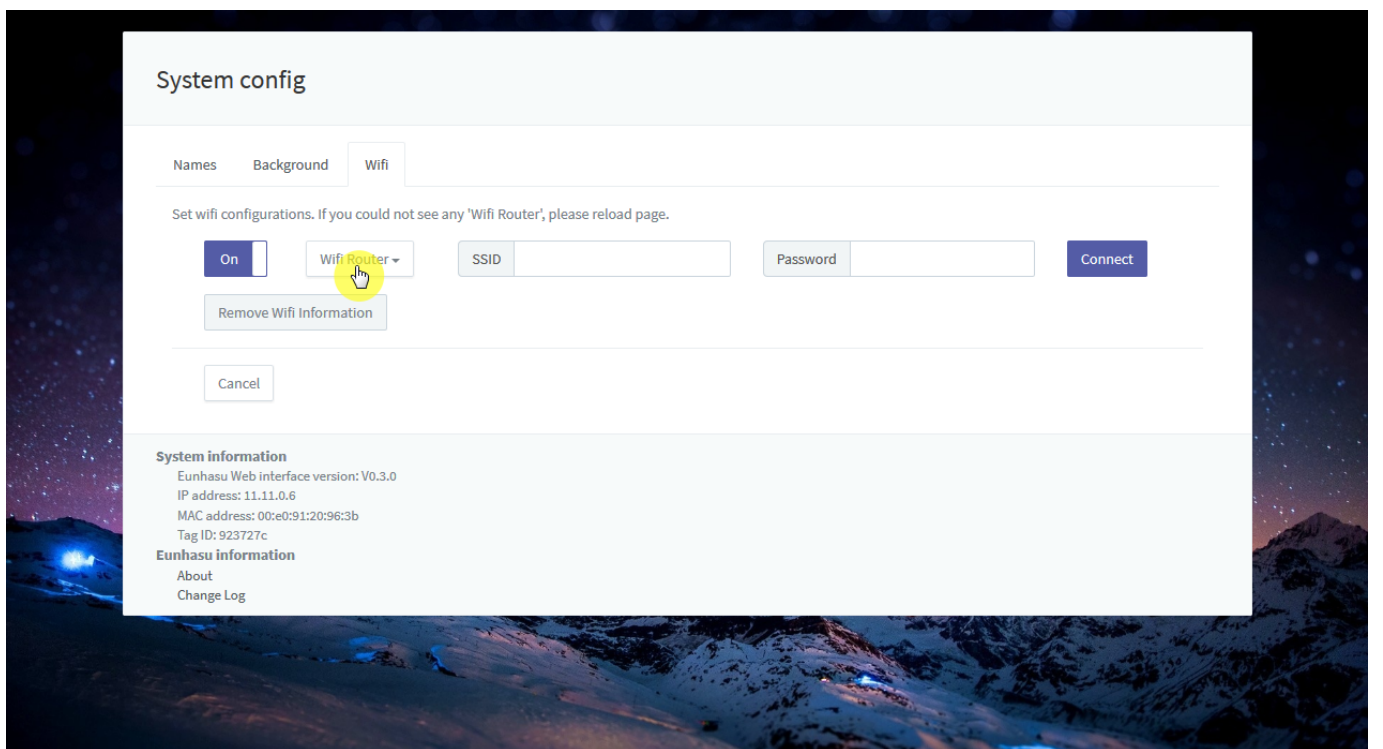


[System config](#)

'Wifi'

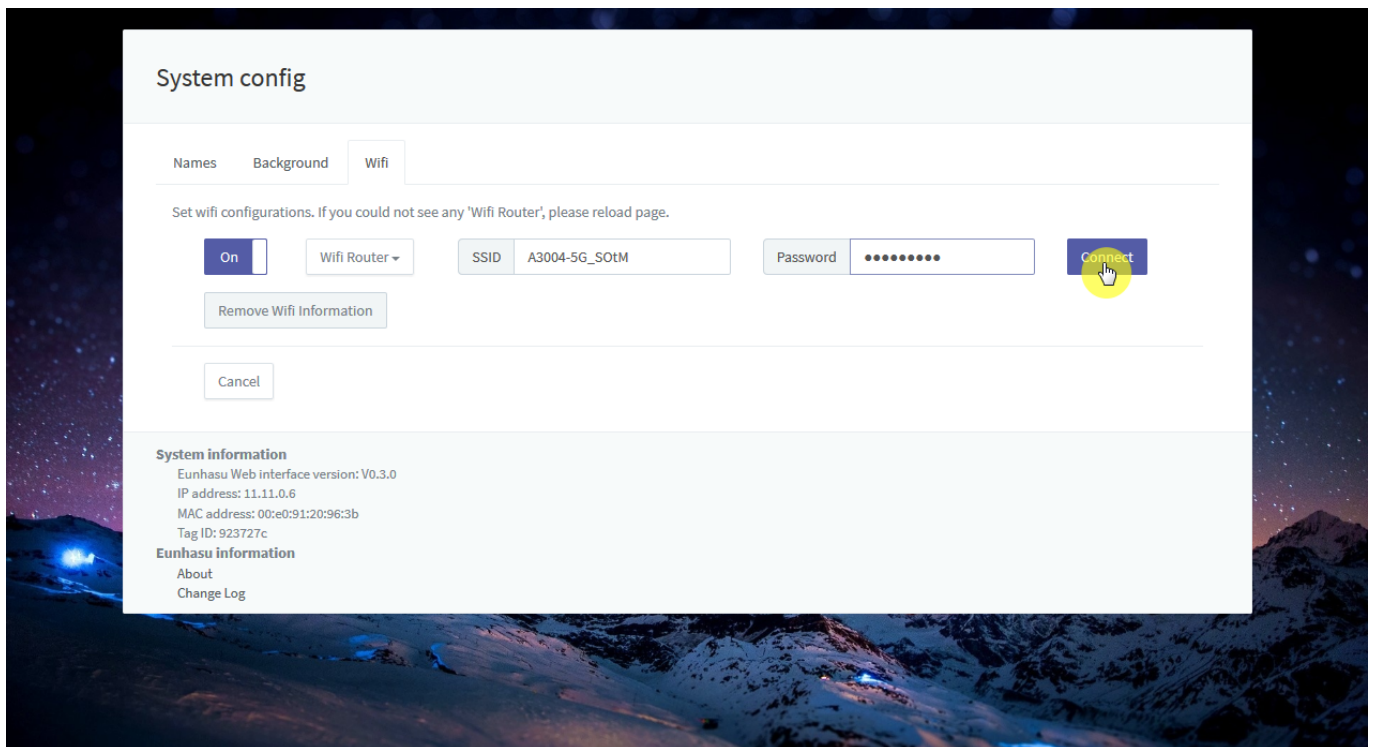


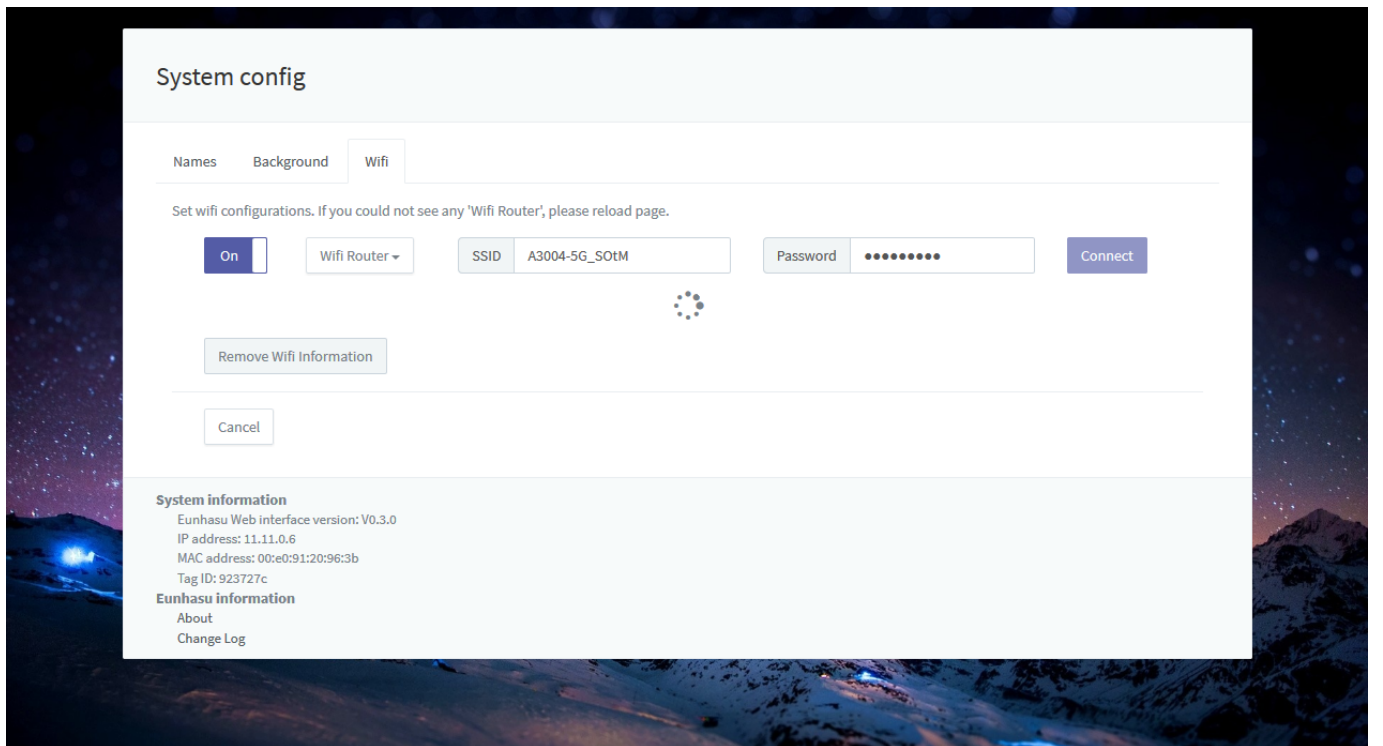
### 'Wifi Router'



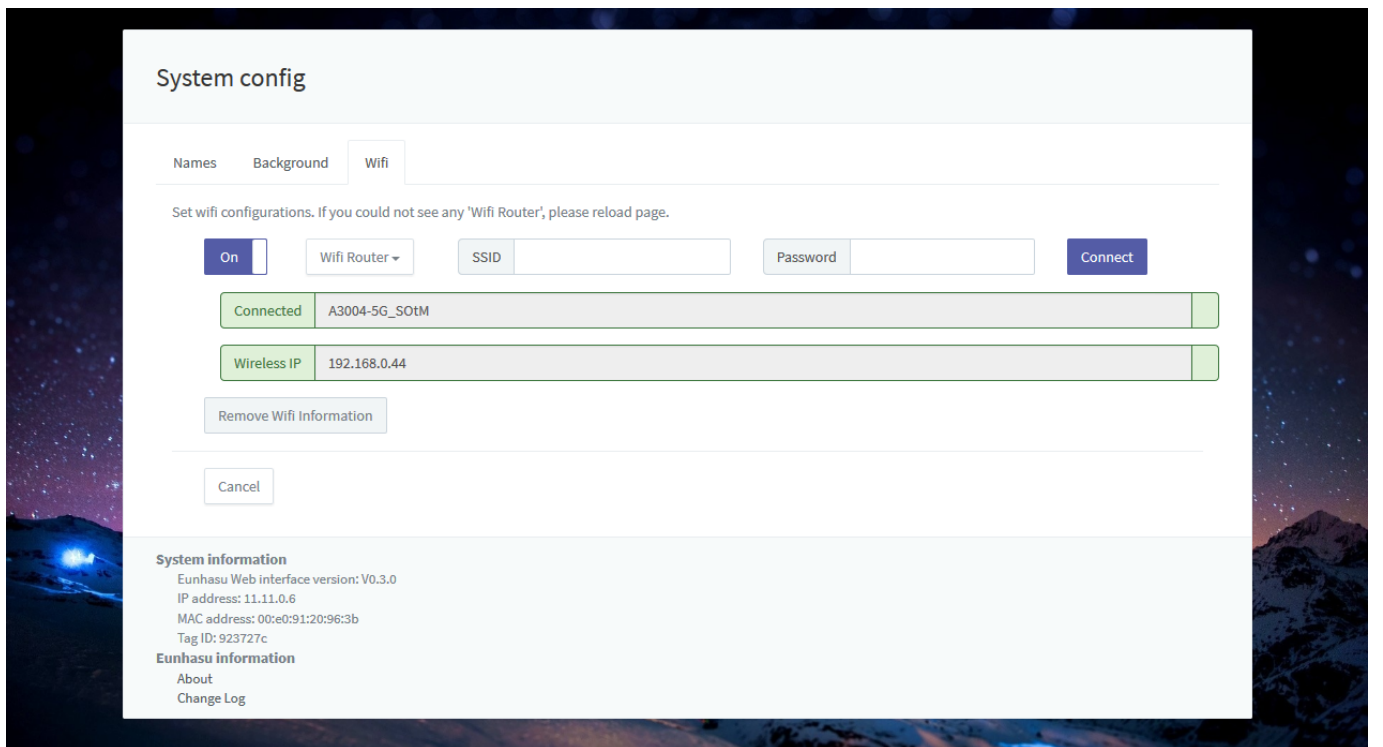


'Connect'





IP



'Remove Wifi Information'

AP 가

The screenshot shows the 'System config' interface with the 'Wifi' tab selected. It includes a 'Names' section with 'Background' and 'Wifi' sub-tabs. Below this, there's a message: 'Set wifi configurations. If you could not see any 'Wifi Router', please reload page.' The configuration area contains an 'On' toggle, a 'Wifi Router' dropdown menu, 'SSID' and 'Password' input fields, and a 'Connect' button. A status bar shows 'Connected' with the SSID 'A3004-5G\_SOTM' and 'Wireless IP' '192.168.0.44'. A 'Remove Wifi information' button is highlighted with a yellow circle and a hand cursor. A 'Cancel' button is also present. At the bottom, 'System information' lists: 'Eunhasu Web interface version: V0.3.0', 'IP address: 11.11.0.6', 'MAC address: 00:e0:91:20:96:3b', and 'Tag ID: 923727c'. 'Eunhasu information' includes links for 'About' and 'Change Log'.

A yellow rounded rectangular banner containing a warning icon (a triangle with an exclamation mark) on the left. To its right, there are three bullet points. The first bullet point is followed by the text 'Eunhasu V0.3.0'. The second and third bullet points are followed by the Korean characters '가' and '가' respectively.

Last Updated: 2017/01/24 21:14

From:  
<https://docs.sotm-audio.com/> - **SOTM docs**

Permanent link:  
[https://docs.sotm-audio.com/doku.php?id=ko:how\\_to\\_use\\_wifi\\_in\\_eunhasu&rev=1485310488](https://docs.sotm-audio.com/doku.php?id=ko:how_to_use_wifi_in_eunhasu&rev=1485310488)

Last update: **2017/01/24 21:14**