

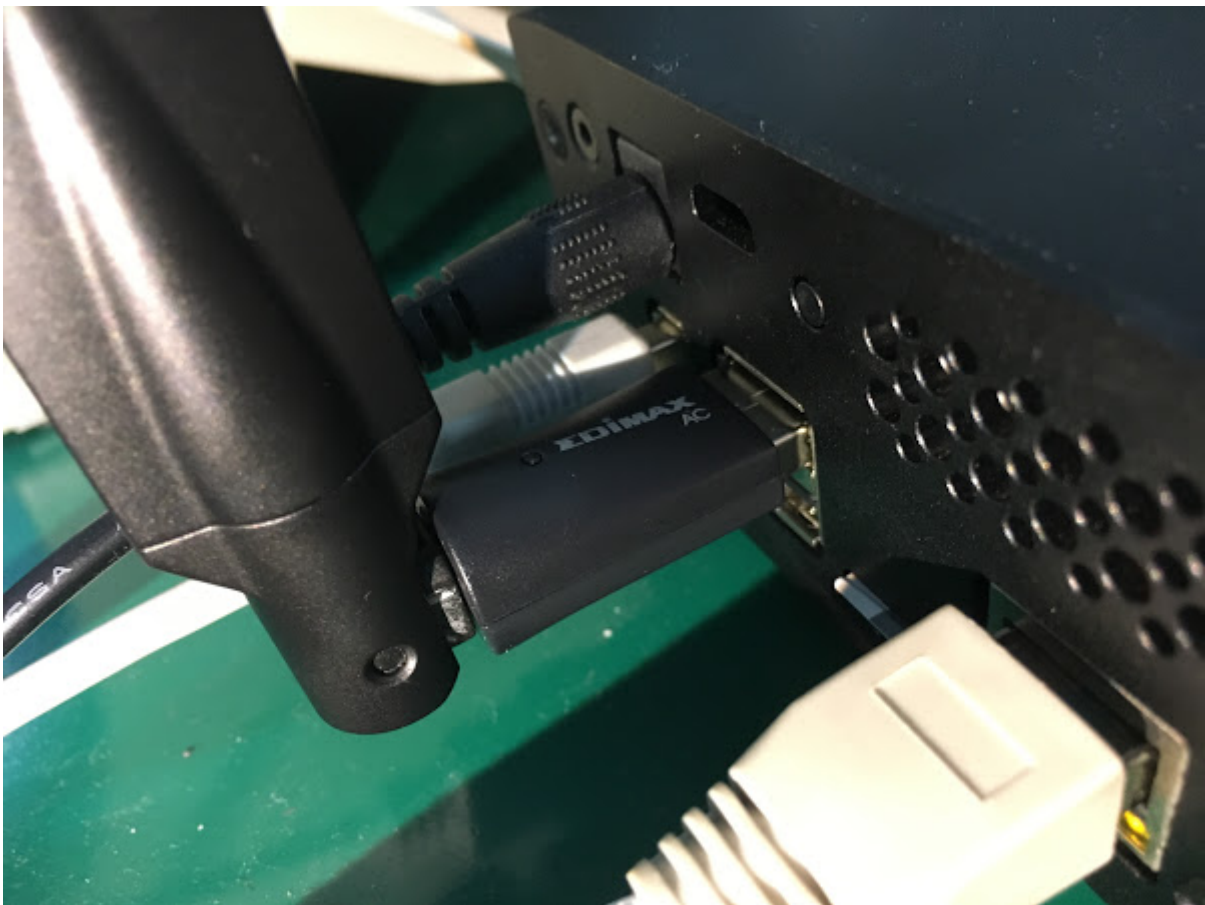
- SMS-200 V0.3.0                      SMS-1000SQ Eunhasu V0.3.0
- Wifi dongle
  - RTL8811AU, RTL8812AU, RTL8812A, RTL8821A                      RTL8814A

USB

Wifi USB

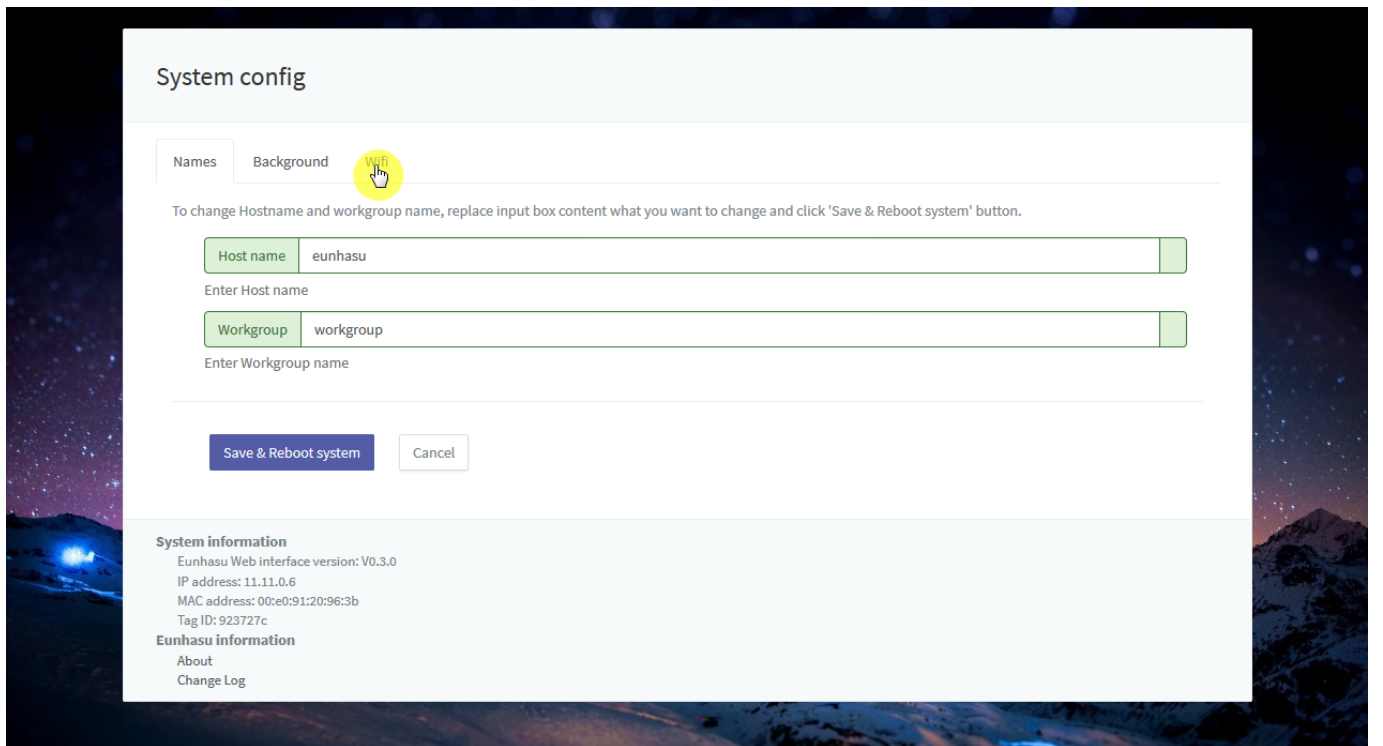
. Wifi

LAN

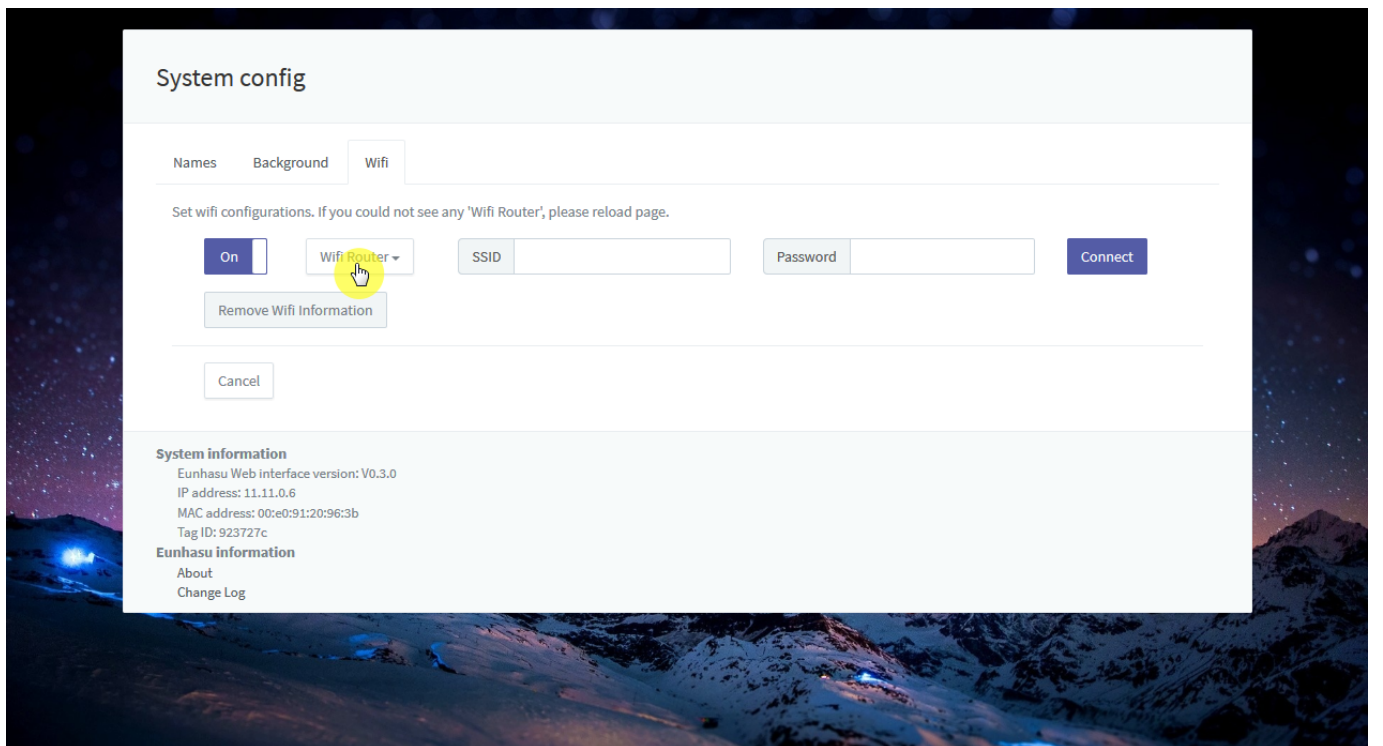


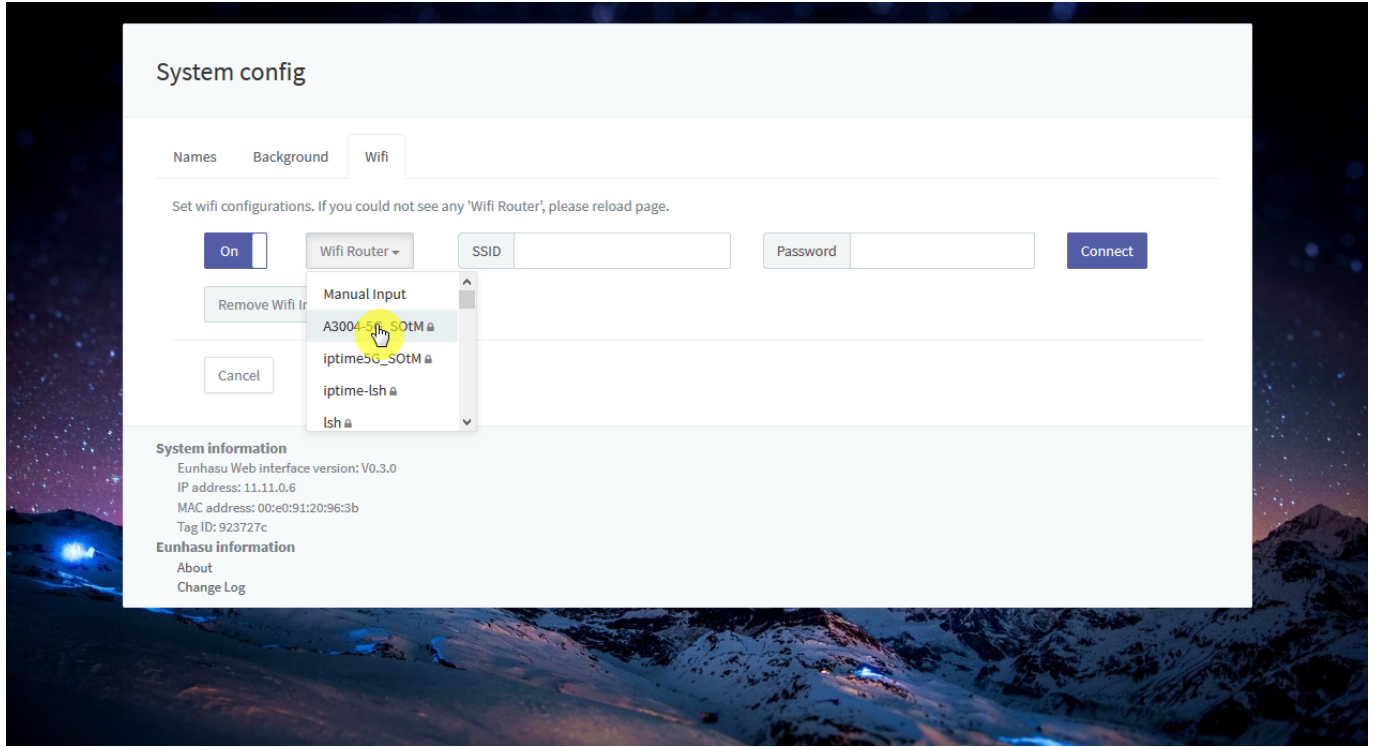
System config

'Wifi'



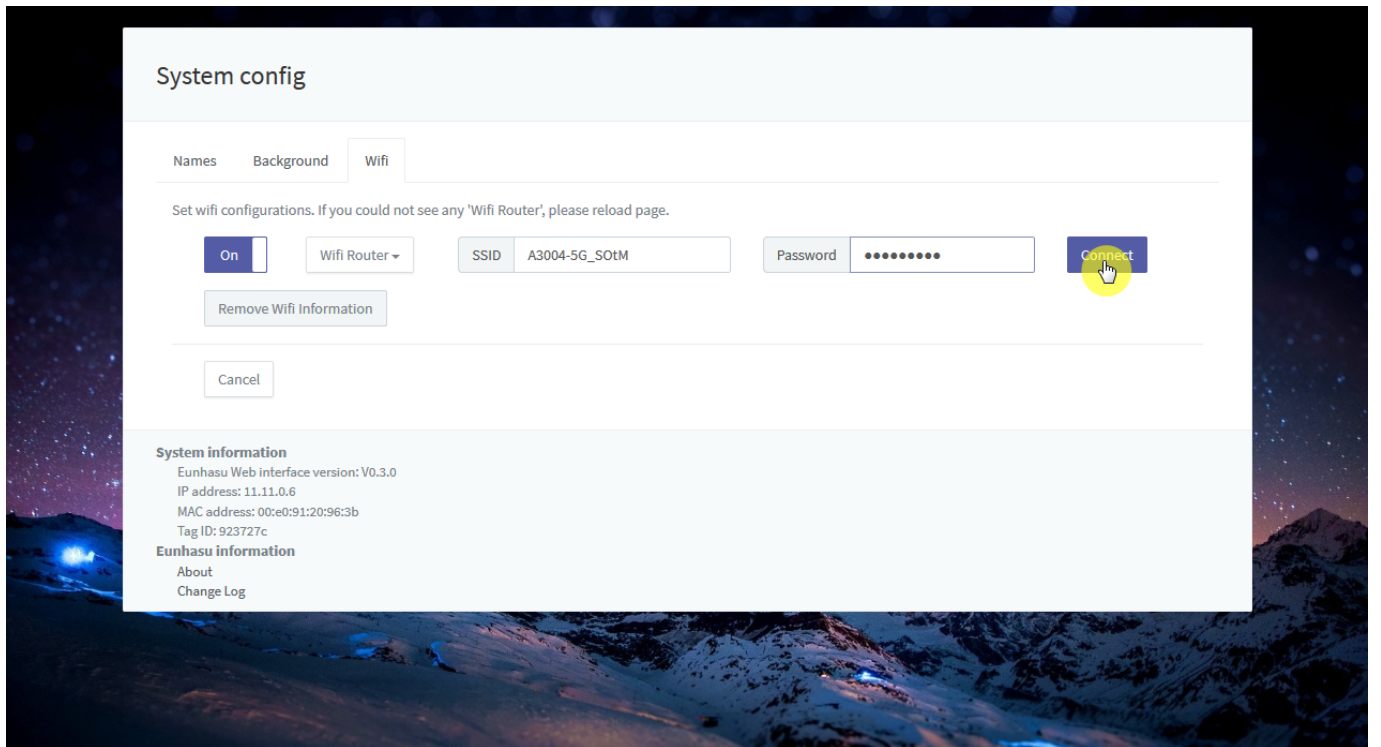
## 'Wifi Router'

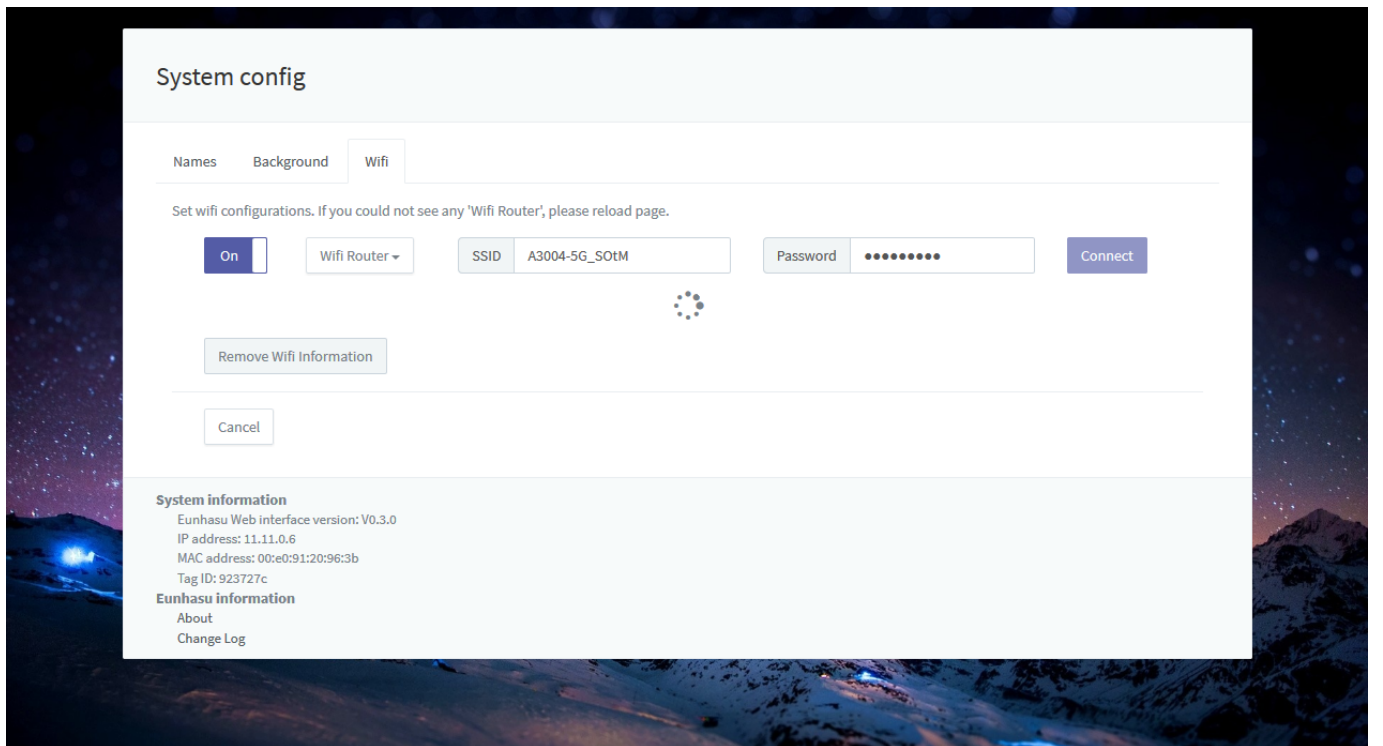




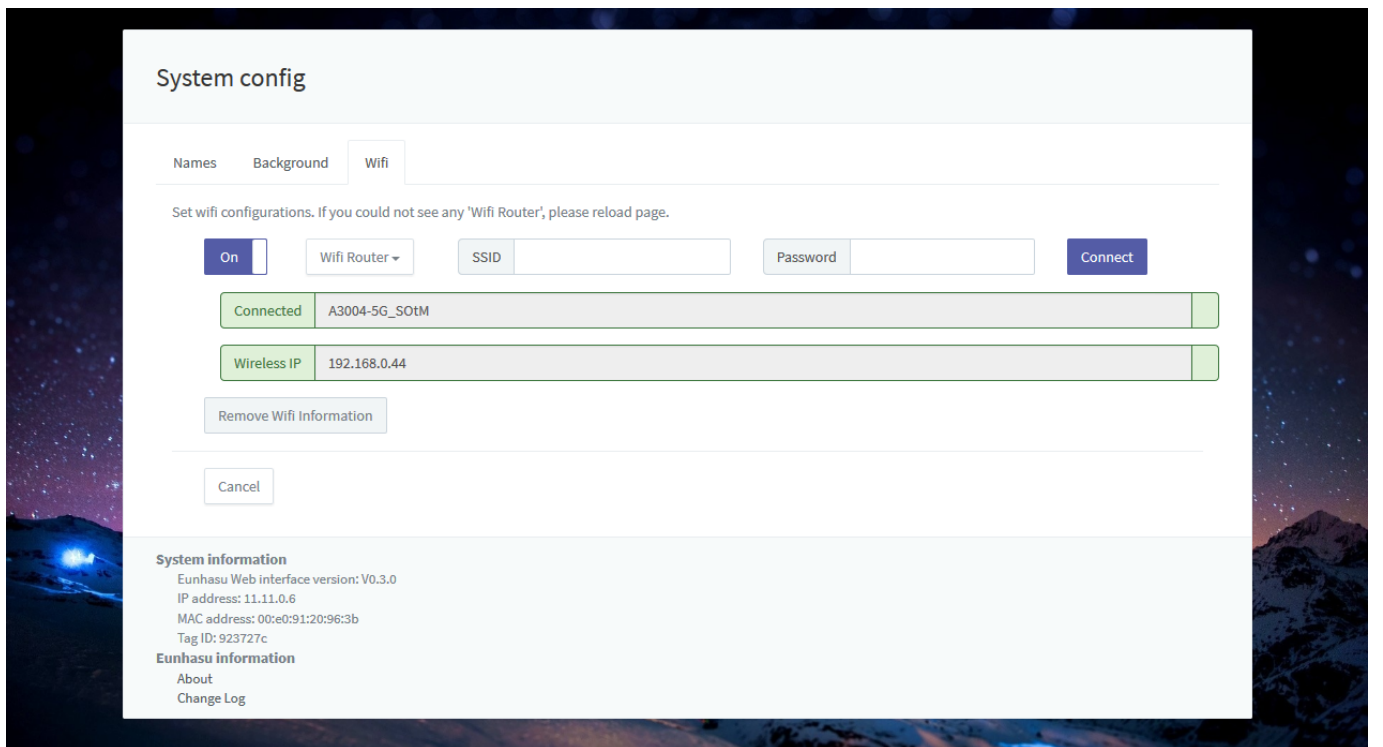
가

'Connect'




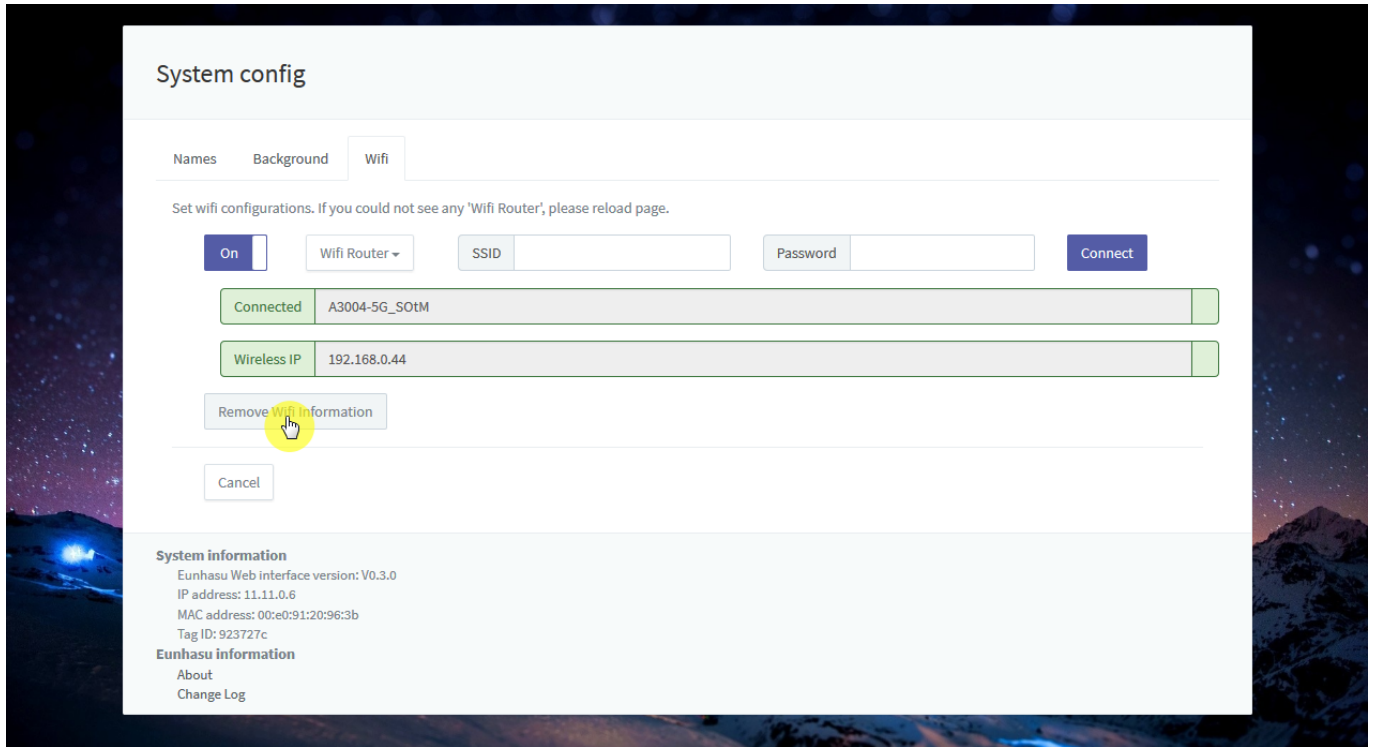


IP

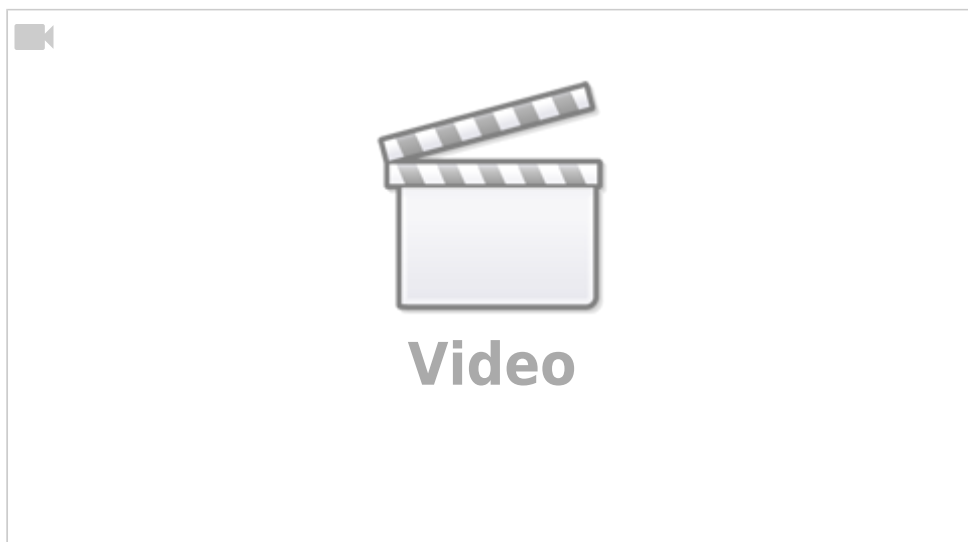


Wifi  
AP

'Remove Wifi Information'



- Eunhasu V0.3.0
- 가
- 가
- 5Ghz
- IP



## Wifi ID

- 0x050D, 0x1106 : Belkin - sercomm
- 0x050D, 0x1109 : Belkin F9L1109 - SerComm
- 0x2001, 0x330E : D-Link - ALPHA
- 0x7392, 0xA822 : Edimax - Edimax
- 0x0DF6, 0x0074 : Sitecom - Edimax
- 0x04BB, 0x0952 : I-O DATA - Edimax
- 0x0789, 0x016E : Logitech - Edimax
- 0x0409, 0x0408 : NEC -
- 0x0B05, 0x17D2 : ASUS - Edimax
- 0x0E66, 0x0022 : HAWKING - Edimax
- 0x0586, 0x3426 : ZyXEL -
- 0x2001, 0x3313 : D-Link - ALPHA
- 0x1058, 0x0632 : WD - Cybertan\*/
- 0x13B1, 0x003F : Linksys WUSB6300
- 0x1740, 0x0100 : EnGenius - EnGenius
- 0x2019, 0xAB30 : Planex - Abocom
- 0x07B8, 0x8812 : Abocom - Abocom
- 0x2001, 0x3315 : D-Link - Cameo
- 0x2001, 0x3316 : D-Link - Cameo
- 0x20F4, 0x805B : TRENDnet - Cameo
- 0x2357, 0x0101 : TP-Link - Archer T4U
- 0x2357, 0x0103 : TP-Link - T4UH
- 0x2357, 0x010D : TP-Link - Archer T4U AC1300
- 0x2357, 0x010F : TP-Link - Archer T4UHP
- 0x148F, 0x9097 : Amped Wireless ACA1

---

Last Updated: 2023/01/27 00:13

From:

<https://docs.sotm-audio.com/> - **SOTM docs**

Permanent link:

[https://docs.sotm-audio.com/doku.php?id=ko:how\\_to\\_use\\_wifi\\_in\\_eunhasu&rev=1674796384](https://docs.sotm-audio.com/doku.php?id=ko:how_to_use_wifi_in_eunhasu&rev=1674796384)

Last update: **2023/01/27 00:13**

