

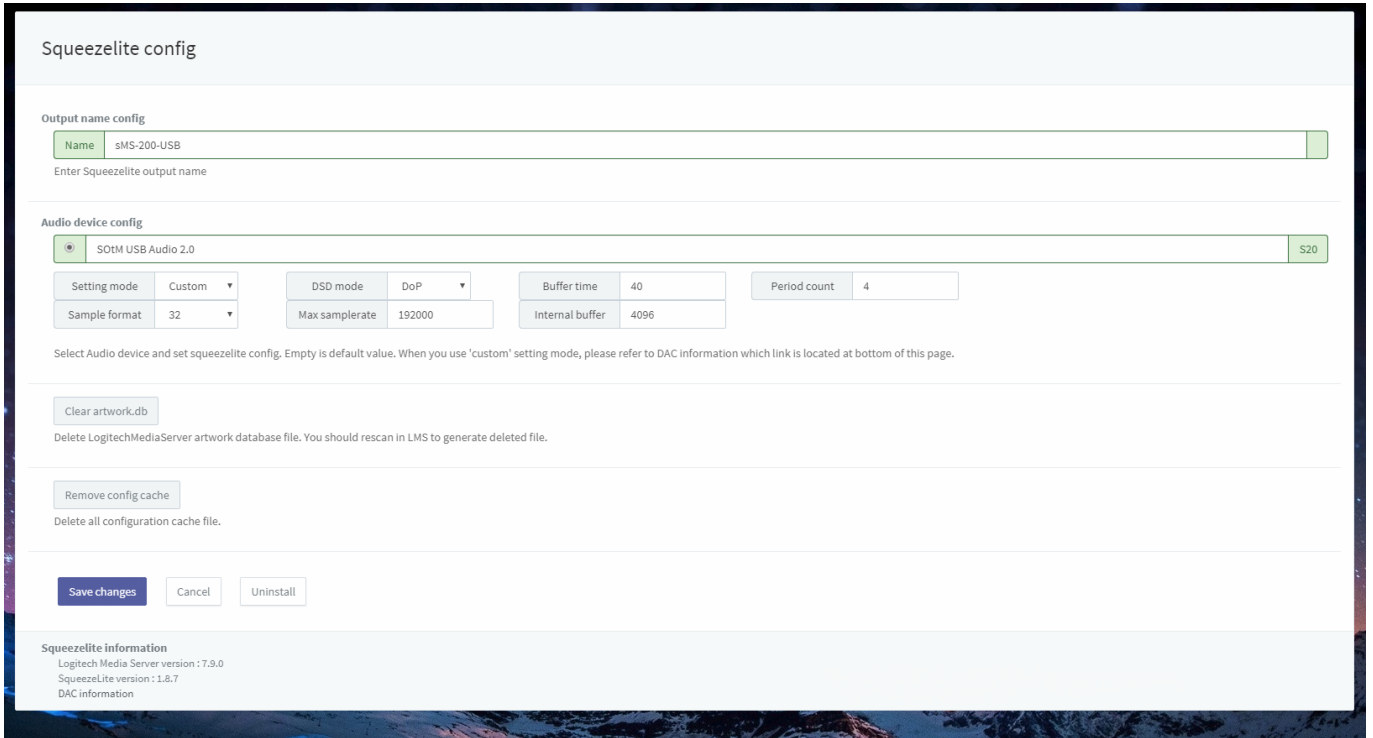
Squeezelite / Logitech Media Server

Squeezelite Logitech Media Server(LMS)

Tidal, Qobuz, internet radio

Logitech Media Server

, LMS



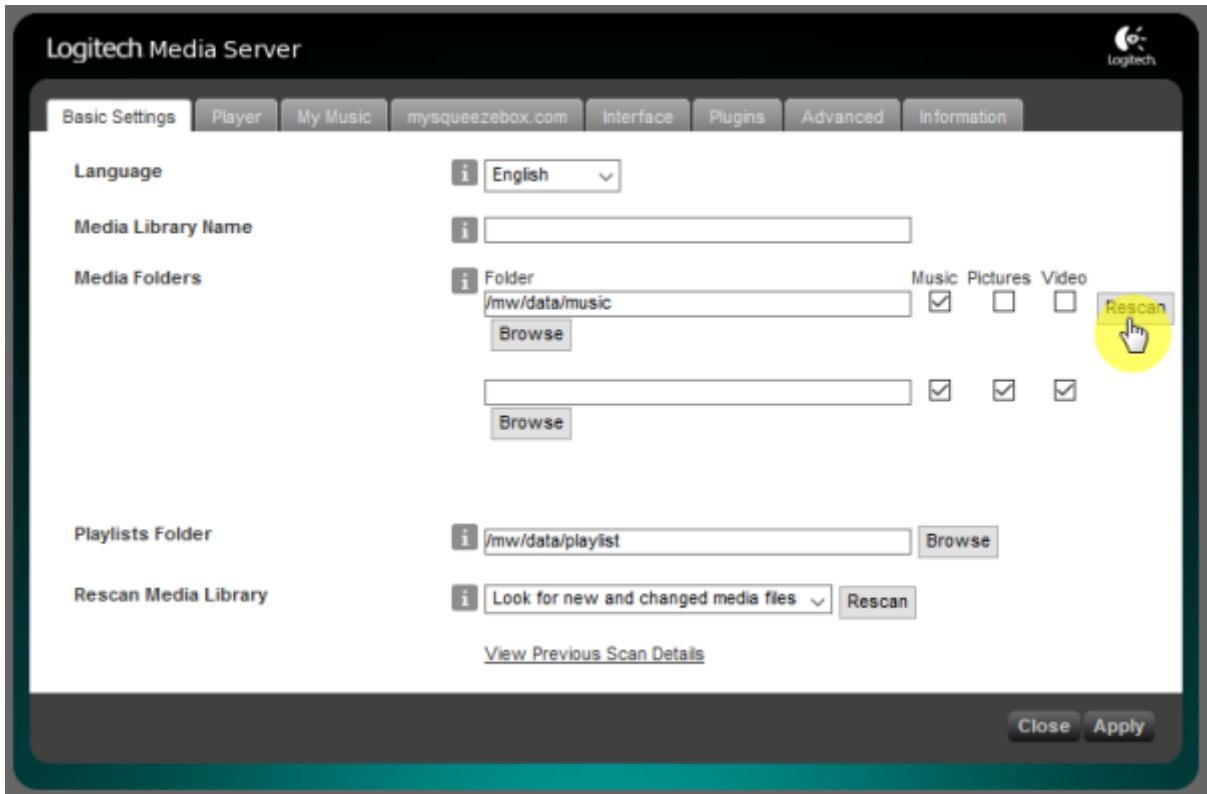
- **ItemName:** LMS
- **Audio device config:** USB DAC
 - **Setting mode:** default . custom
가
 - **DSD mode:** DSD . DoP Native DSD
. Native DSD DAC가 Native DSD
 - **Buffer time:**
 - **Period count:**
 - **Sample format:** 가 (sample format)
. (가 가)
 - **Max sample rate:** 가 (sample rate)
. (가 가 가)
 - **Internal buffer:**
- **Clear artwork.db:** LMS . LMS rescan
- **Audio device config:**

LMS rescan

Settings



Basic Settings "Rescan"



"Scanning - View Progress"



Quboz, TIDAL

ickStream

- http://wiki.ickstream.com/index.php/Open_Beta_Squeezebox_Installation

ickStream 가 , LMS > Settings > Advanced > ickStream

ickStream

ickStream

The screenshot shows the Logitech Media Server web interface. At the top, there are navigation tabs: Basic Settings, Player, My Music, mysqueezebox.com, Interface, Plugins, Advanced, and Information. The 'Advanced' tab is selected, and a sub-tab for 'ickStream' is active. Below the navigation, a message states 'Changes have been saved.' The settings are as follows:

- Sort albums for artist:
- Background daemon port:
- SSL peer verification:
- Proxied streaming for hires services:
- ickStream Music Platform Service:

Below the 'Login to ickStream Music Platform' button, there is a yellow circle with a hand cursor icon pointing to it. A text instruction reads: 'If you have just logged in successfully, click "Refresh" button to'. At the bottom, there are links for 'Terms of use' (Logitech Media Server, SqueezeLite) and 'Privacy Policy'.

This screenshot shows the same Logitech Media Server interface, but the 'ickStream Music Platform Service' section has updated. It now displays 'Logged in as: sotm.dev@gmail.com' with 'Refresh' and 'Logout' buttons. Below this, there is a link: 'Add or remove services from your ickStream Music Platform account'. Other settings remain the same as in the previous screenshot.

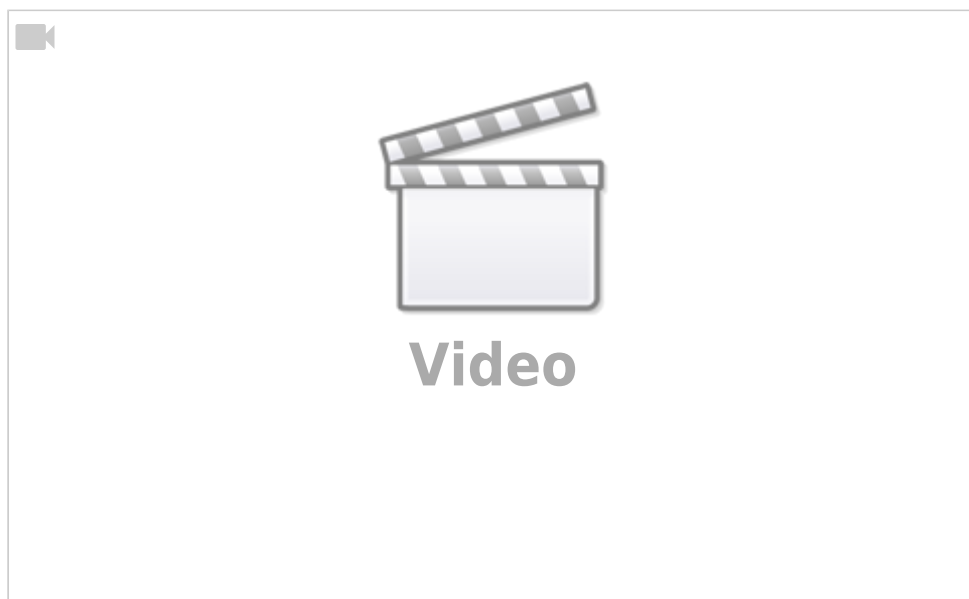
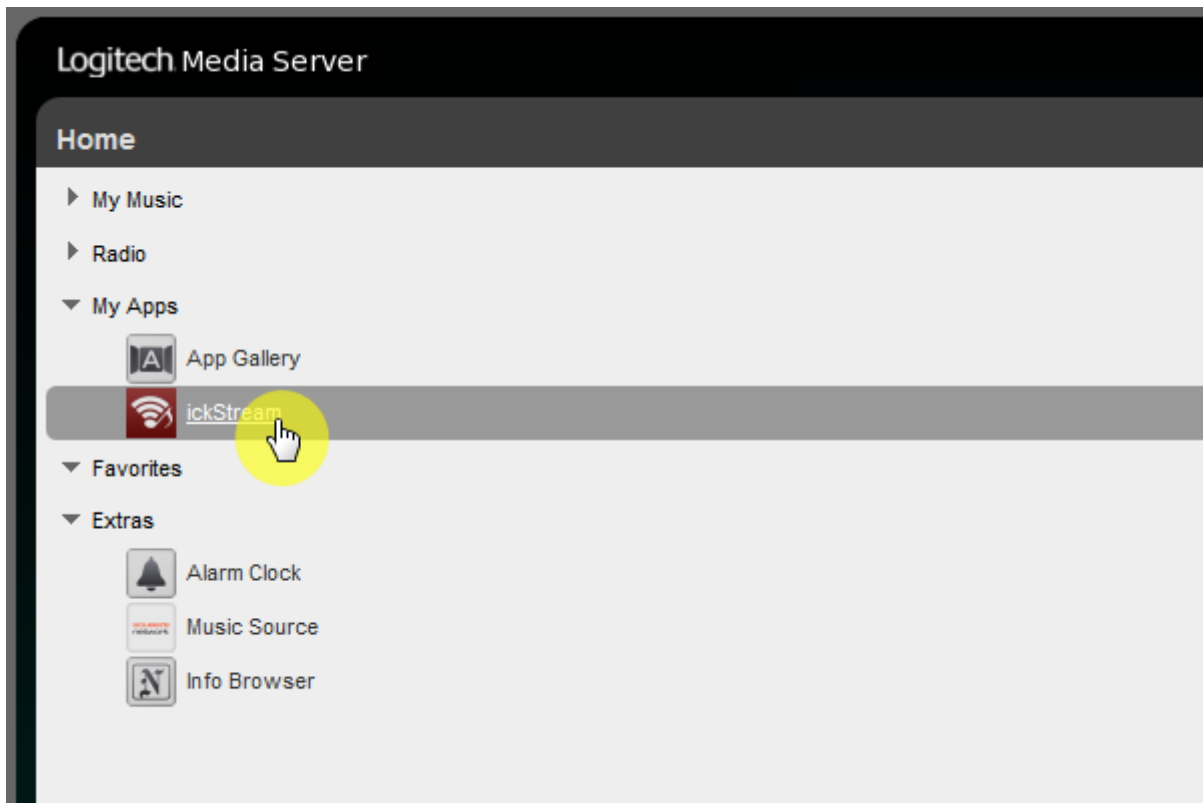
- Sort albums for artist:
- Background daemon port:
- SSL peer verification:
- Proxied streaming for hires services:
- ickStream Music Platform Service:

Below the 'Logout' button, there is a link: 'Add or remove services from your ickStream Music Platform account'. The 'Remotely controllable players' section shows 'sMS-200-USB' with a 'Refresh' button. The 'Registered players' section shows 'None of the connected Squeezebox players are registered on ickStream' with 'Refresh' and 'Re-register all players' buttons. At the bottom, there are links for 'Terms of use' (Logitech Media Server, SqueezeLite) and 'Privacy Policy'.

LMS

My Apps

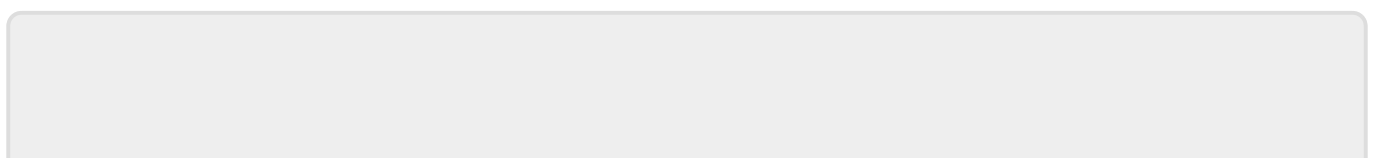
ickStream



Spotify

; Spotify

: 2018/04/26 03:39



From:

<https://docs.sotm-audio.com/> - **SotM docs**

Permanent link:

<https://docs.sotm-audio.com/doku.php?id=ko:squeezelite&rev=1524728366>

Last update: **2018/04/26 03:39**

